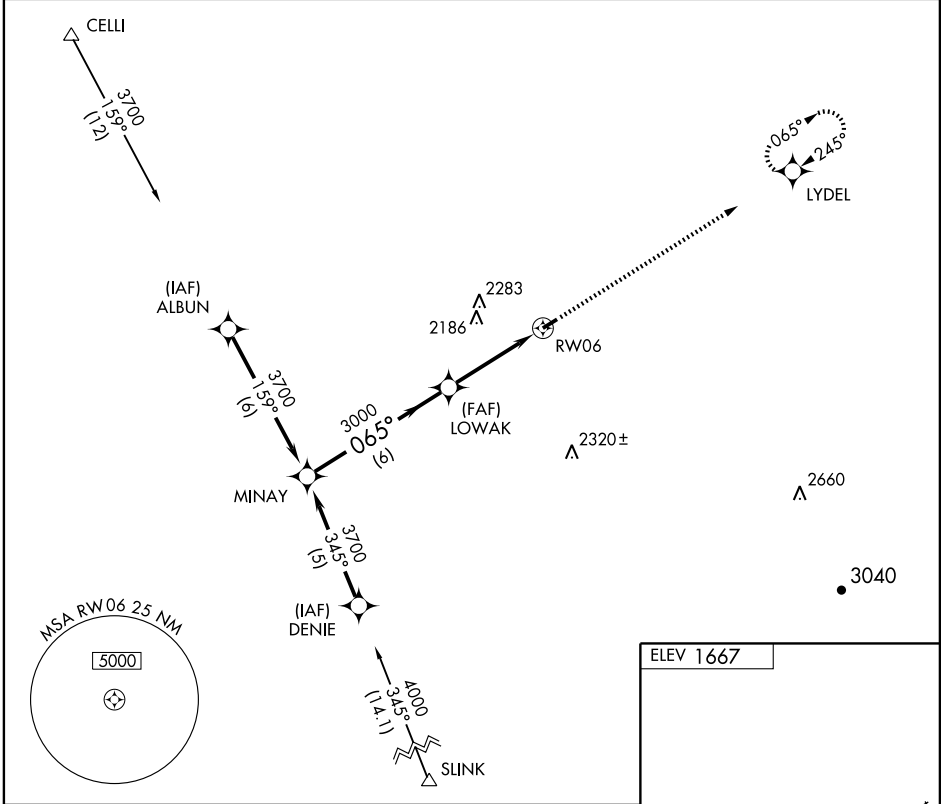


GPS RWY 6
LOGAN COUNTY (6L4)

APP CRS	Rwy Idg	3604
065°	TDZE	1665
	Apt Elev	1667

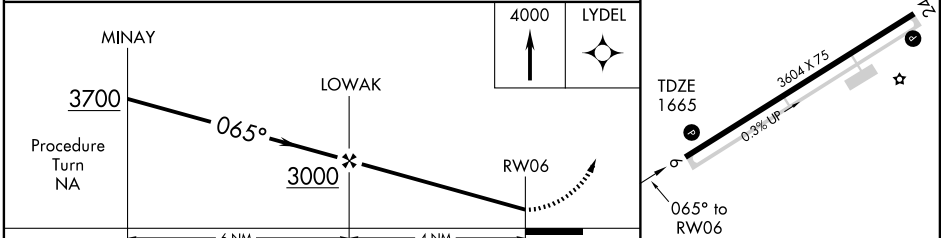
<p>▼ Use Charleston altimeter setting.</p> <p>▲ NA</p>	<p>MISSED APPROACH: Climb to 4000 direct LYDEL WP and hold.</p>
--	---

<p>CHARLESTON APP CON</p> <p>119.2 269.125</p>	<p>CTAF 0</p> <p>122.9</p>
---	--



NE-4, 11 MAR 2010 to 08 APR 2010

NE-4, 11 MAR 2010 to 08 APR 2010



CATEGORY	A	B	C	D
S-6	2500-1 835 (900-1)	2500-1¼ 835 (900-1¼)	2500-2½ 835 (900-2½)	NA
CIRCLING	2500-1 833 (900-1)	2500-1¼ 833 (900-1¼)	2500-2½ 833 (900-2½)	NA

