

ELLENVILLE, NEW YORK

AL-9390 (FAA)

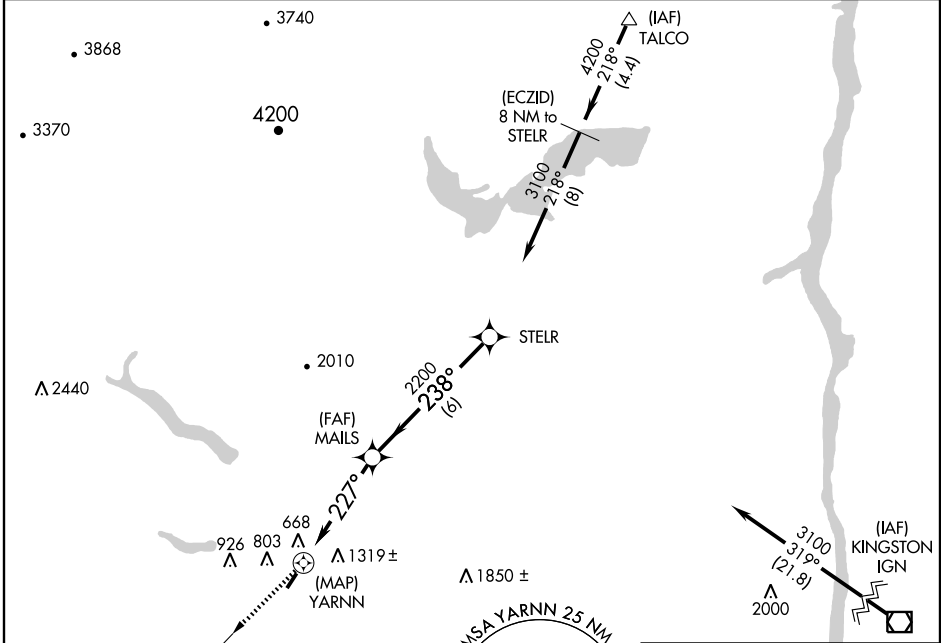
GPS RWY 22

ELLENVILLE/JOSEPH Y RESNICK (N89)

APP CRS 227°	Rwy Idg 3538
	TDZE 289
	Apt Elev 290

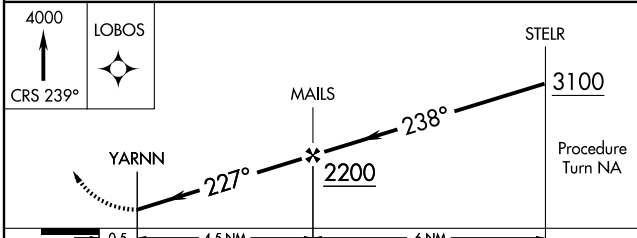
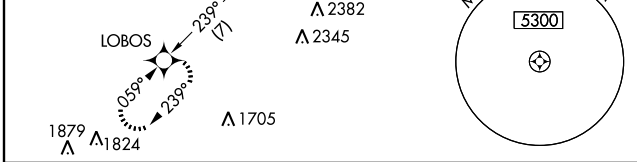
<p>▽ Use Stewart Intl altimeter setting. ▲ NA Circling not authorized east of Rwy 4-22.</p>	<p>MISSED APPROACH: Climb to 4000 via 239° course to LOBOS WP and hold.</p>
---	---

<p>NEW YORK APP CON 132.75 363.1</p>	<p>UNICOM 122.8 (CTAF) 0</p>
---	---

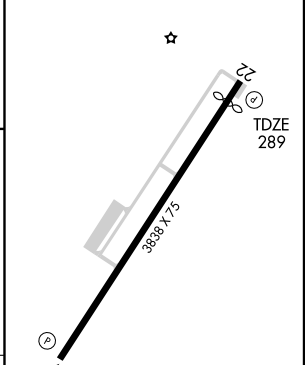


NE-2, 19 NOV 2009 to 17 DEC 2009

NE-2, 19 NOV 2009 to 17 DEC 2009



ELEV 290	D
----------	---



CATEGORY	A	B	C	D
S-22	2080-1¼ 1791 (1800-1¼)	2080-1½ 1791 (1800-1½)	NA	
CIRCLING	2080-1¼ 1790 (1800-1¼)	2080-1½ 1790 (1800-1½)	NA	

MIRL Rwy 4-22 0
REIL Rwy 4-22

ELLENVILLE, NEW YORK
Orig 09295

41°44'N - 74°23'W

ELLENVILLE/JOSEPH Y RESNICK (N89)

GPS RWY 22