

GPS RWY 6

COLSTRIP (M46)

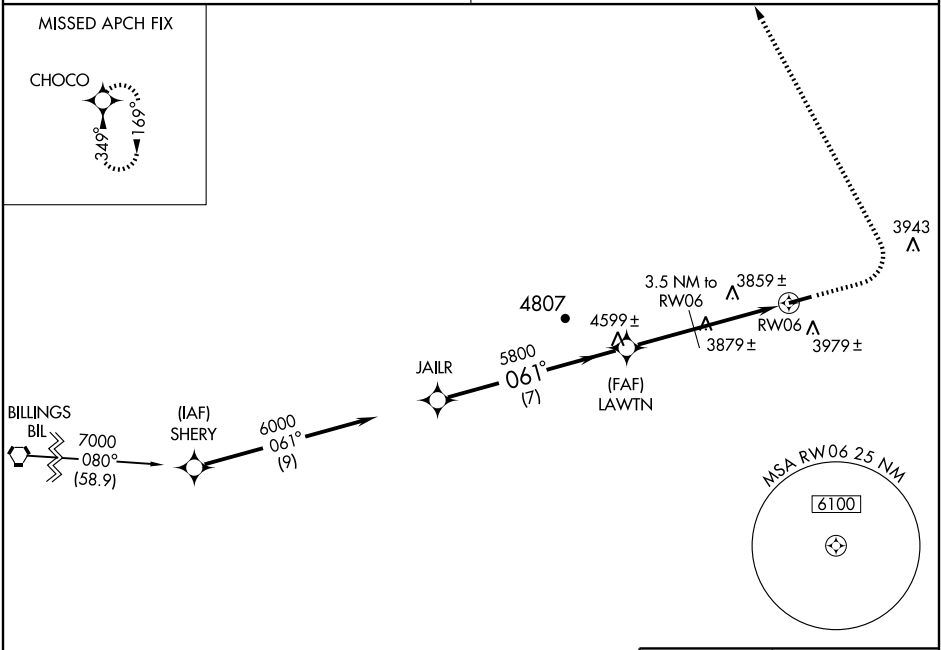
APP CRS 061°	Rwy Idg 5100
	TDZE 3426
	Apt Elev 3426

NA When local altimeter not received use Miles City altimeter setting.

MISSED APPROACH: Climb to 4500 then climbing left turn to 6000 direct CHOCO WP and hold.

SALT LAKE CENTER
127.75 351.9

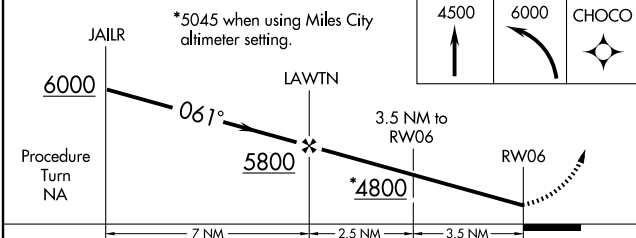
CTAF
122.9



NW-1, 11 MAR 2010 to 08 APR 2010

NW-1, 11 MAR 2010 to 08 APR 2010

ELEV 3426



CATEGORY	A	B	C	D
S-6	4220-1 794 (800-1)	4220-1¼ 794 (800-1¼)	4220-2¼ 794 (800-2¼)	NA
CIRCLING	4340-1¼ 914 (1000-1¼)	914 (1000-1¼)	4340-2¾ 914 (1000-2¾)	NA

MILES CITY ALTIMETER SETTING				
S-6	NA			
CIRCLING	4580-1¼ 1154 (1200-1¼)	4580-1½ 1154 (1200-1½)	4580-3 1154 (1200-3)	NA

