

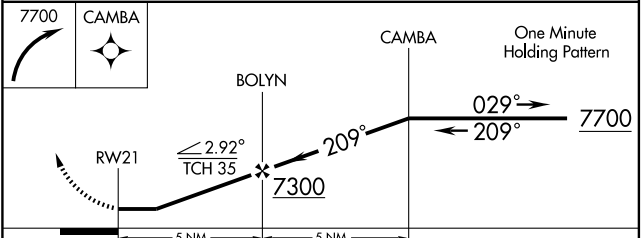
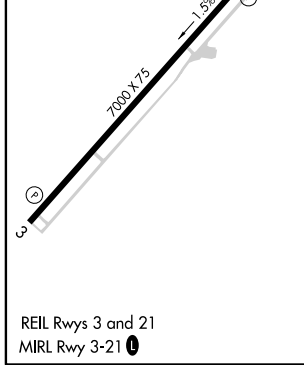
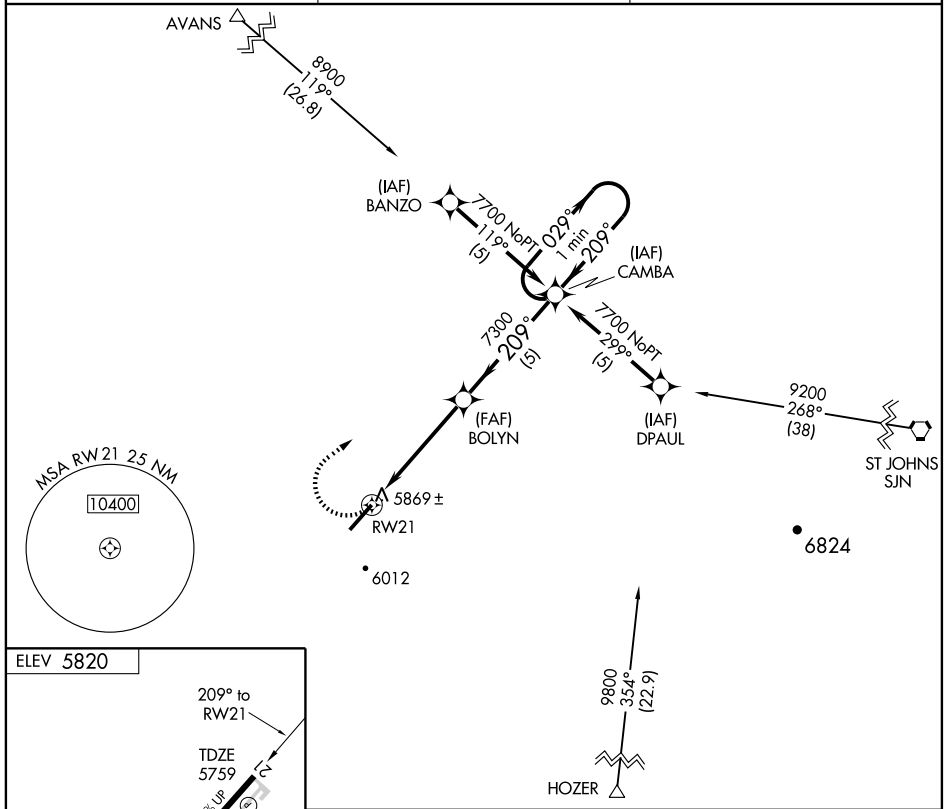
GPS RWY 21

TAYLOR MUNI (TYL)

APP CRS 209°	Rwy Idg 7000
	TDZE 5759
	Apt Elev 5820

NA MISSED APPROACH: Climbing right turn to 7700 direct CAMBA WP and hold.

AWOS-3 119.075	ALBUQUERQUE CENTER 132.9 239.05	UNICOM 122.7 (CTAF)
--------------------------	---	-------------------------------



CATEGORY	A	B	C	D
S-21	6120-1 361 (300-1)			6120-1½ 361 (300-1½)
CIRCLING	6320-1 500 (500-1)	6380-1 560 (600-1)	6380-1½ 560 (600-1½)	6480-2 660 (700-2)

SW-4, 11 MAR 2010 to 08 APR 2010

SW-4, 11 MAR 2010 to 08 APR 2010