

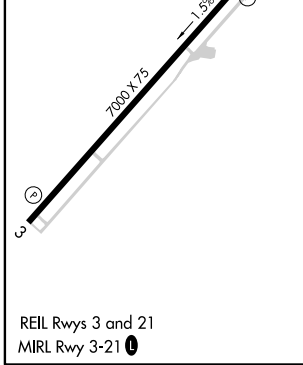
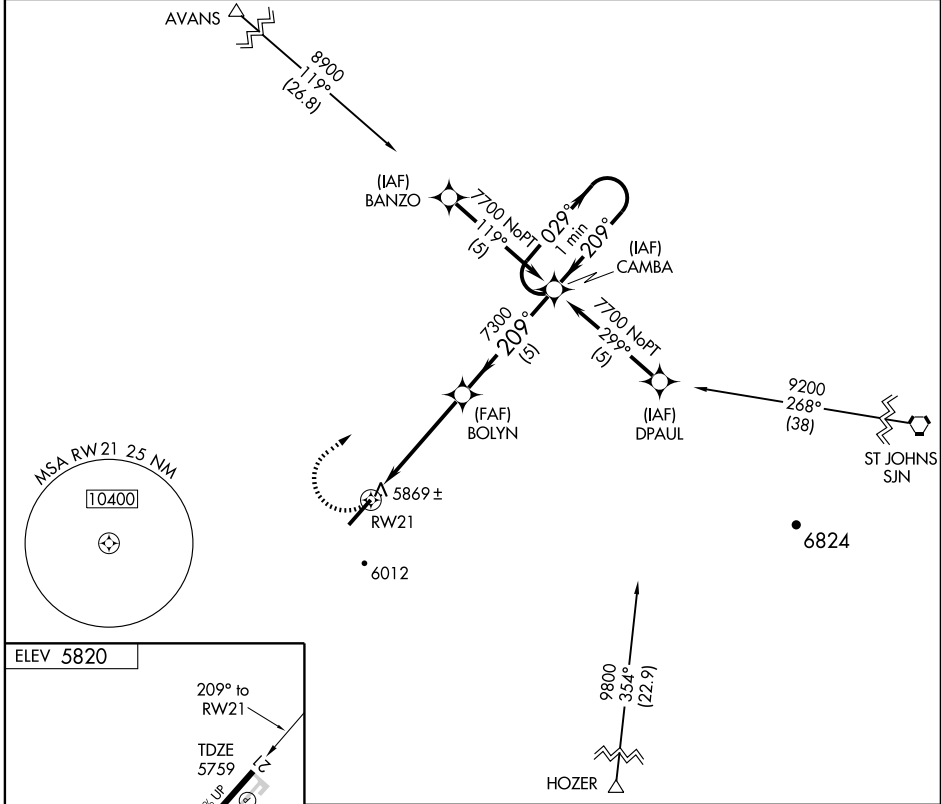
# GPS RWY 21

TAYLOR MUNI (TYL)

APP CRS <b>209°</b>	Rwy Idg <b>7000</b>
	TDZE <b>5759</b>
	Apt Elev <b>5820</b>

**NA** MISSED APPROACH: Climbing right turn to 7700 direct CAMBA WP and hold.

AWOS-3 <b>119.075</b>	ALBUQUERQUE CENTER <b>132.9 239.05</b>	UNICOM <b>122.7 (CTAF)</b>
--------------------------	---	-------------------------------



7700 CAMBA	CAMBA			One Minute Holding Pattern
RW21	BOLYN	CAMBA		7700
	$\leq 2.92^\circ$ TCH 35	209°	029°	209°
	5 NM	5 NM		
CATEGORY	A	B	C	D
S-21	6120-1 361 (300-1)			6120-1½ 361 (300-1½)
CIRCLING	6320-1 500 (500-1)	6380-1 560 (600-1)	6380-1½ 560 (600-1½)	6480-2 660 (700-2)

SW-4, 19 NOV 2009 to 17 DEC 2009

SW-4, 19 NOV 2009 to 17 DEC 2009