

RNAV (GPS) RWY 7

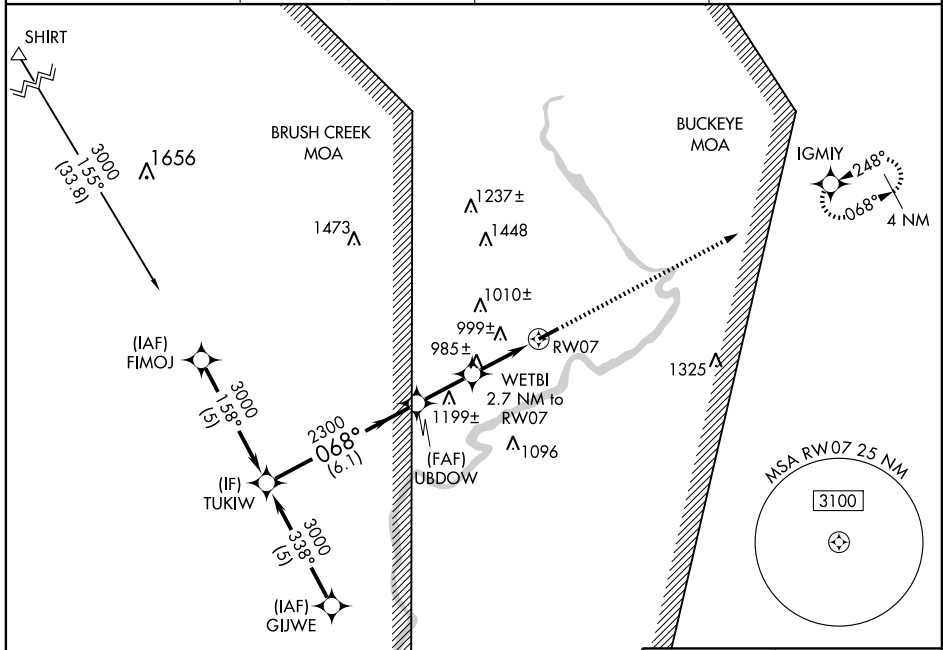
WAVERLY/PIKE COUNTY (EOP)

APP CRS 068°	Rwy Idg 4900
	TDZE 660
	Apt Elev 660

NA DME/DME RNP-0.3 NA. Visibility reduction by helicopters NA. Use Portsmouth altimeter setting; when not received, use Rickenbacker Intl altimeter setting and increase all MDA 60 feet and LNAV Cats C and D, and Circling Cats A, C, and D visibility ¼ mile.

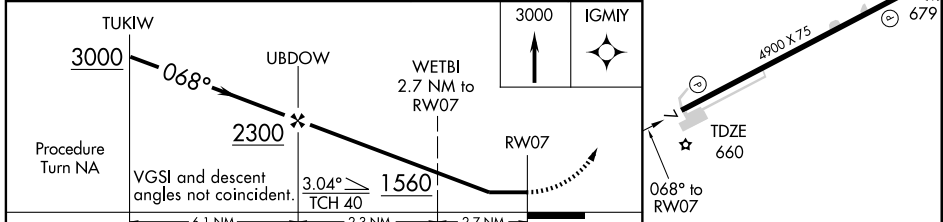
MISSED APPROACH: Climb to 3000 direct IGMYY and hold.

AWOS-A 118.4	GREATER PORTSMOUTH RGNL AWOS-3 125.175	INDIANAPOLIS CENTER 135,575 290.4	UNICOM 123.0 (CTAF) 0
------------------------	---	---	---------------------------------



Procedure NA for arrivals at YRK VORTAC on radials 291 CW 035.

YORK YRK 3000 352° (22.2)



CATEGORY	A	B	C	D
LNAV MDA	1440-1 780 (800-1)	1440-1¼ 780 (800-1¼)	1440-2¼ 780 (800-2¼)	1440-2½ 780 (800-2½)
CIRCLING	1500-1 840 (900-1)	1520-1¼ 860 (900-1¼)	1520-2½ 860 (900-2½)	1520-2¾ 860 (900-2¾)

REIL Rwy 7 and 25
MIRL Rwy 7-25 0

EC-2, 19 NOV 2009 to 17 DEC 2009

EC-2, 19 NOV 2009 to 17 DEC 2009