

(L711.LHS) 07074

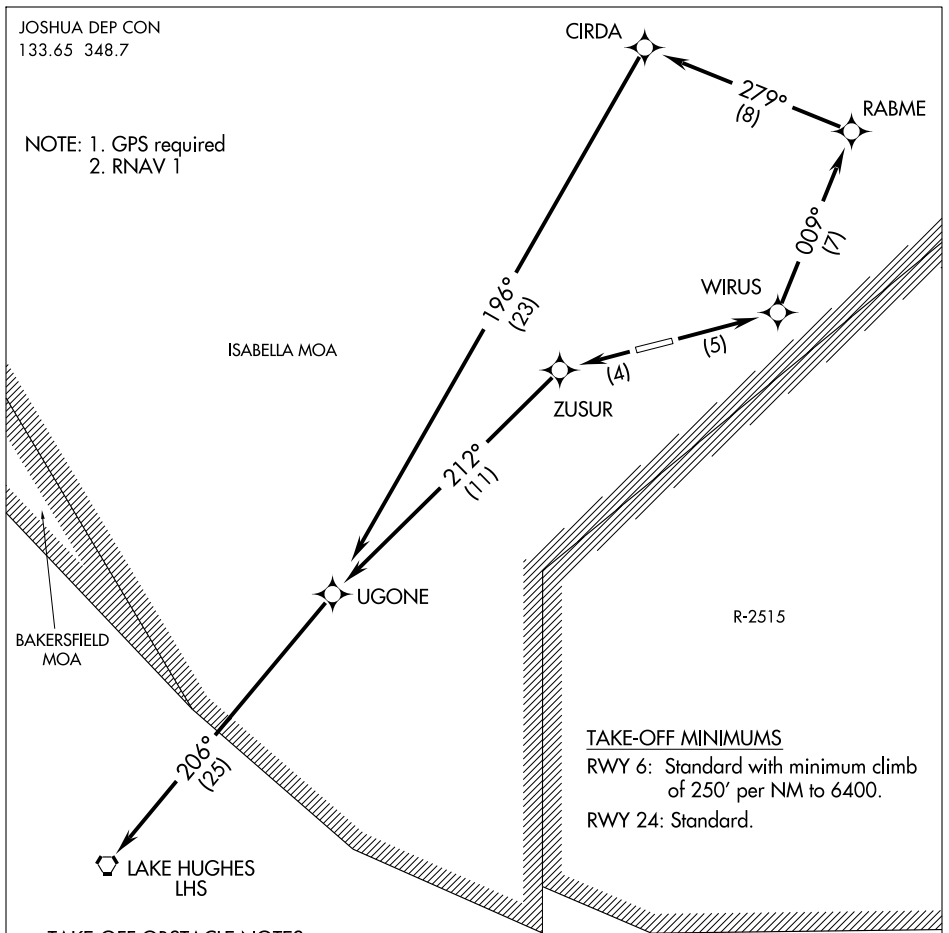
SL-9440 (FAA)

CALIFORNIA CITY MUNI (L71)

# CALIFORNIA CITY ONE DEPARTURE (RNAV) (OBSTACLE) CALIFORNIA CITY, CALIFORNIA

JOSHUA DEP CON  
133.65 348.7

NOTE: 1. GPS required  
2. RNAV 1



### TAKE-OFF MINIMUMS

RWY 6: Standard with minimum climb of 250' per NM to 6400.  
 RWY 24: Standard.

### TAKE-OFF OBSTACLE NOTES

- Rwy 6: Ground 37' from departure end of runway, 408' right of centerline, 0' AGL/2406' MSL.
- Rwy 24: Windsock 8' from departure end of runway, 159' right of centerline, 25' AGL/2476' MSL.
- Bush 220' from departure end of runway 456' left of centerline, 9' AGL/2467' MSL.
- Bush 550' from departure end of runway, 447' left of centerline, 16' AGL/2474' MSL.
- Bush 365' from departure end of runway, 299' left of centerline, 8' AGL/2469' MSL.
- Bush 245' from departure end of runway, 449' left of centerline, 8' AGL/2466' MSL.
- Bush 422' from departure end of runway, 454' left of centerline, 12' AGL/2470' MSL.
- Bush 355' from departure end of runway, 106' left of centerline, 6' AGL/2467' MSL.

NOTE: Chart not to scale.

### DEPARTURE ROUTE DESCRIPTION

TAKE-OFF RUNWAY 6: Climb direct WIRUS, then via depicted route to LHS VORTAC. Maintain 9000.

TAKE-OFF RUNWAY 24: Climb direct ZUSUR, then via depicted route to LHS VORTAC. Maintain 9000.

CALIFORNIA CITY ONE DEPARTURE (RNAV) (OBSTACLE) CALIFORNIA CITY, CALIFORNIA

(L711.LHS) 07074

CALIFORNIA CITY MUNI (L71)

SW-3, 11 MAR 2010 to 08 APR 2010

SW-3, 11 MAR 2010 to 08 APR 2010