

LOC/DME I-PBX <b>109.7</b> Chan <b>34</b>	APP CRS <b>273°</b>	Rwy Idg <b>4650</b> TDZE <b>1466</b> Apt Elev <b>1473</b>
---	------------------------	---

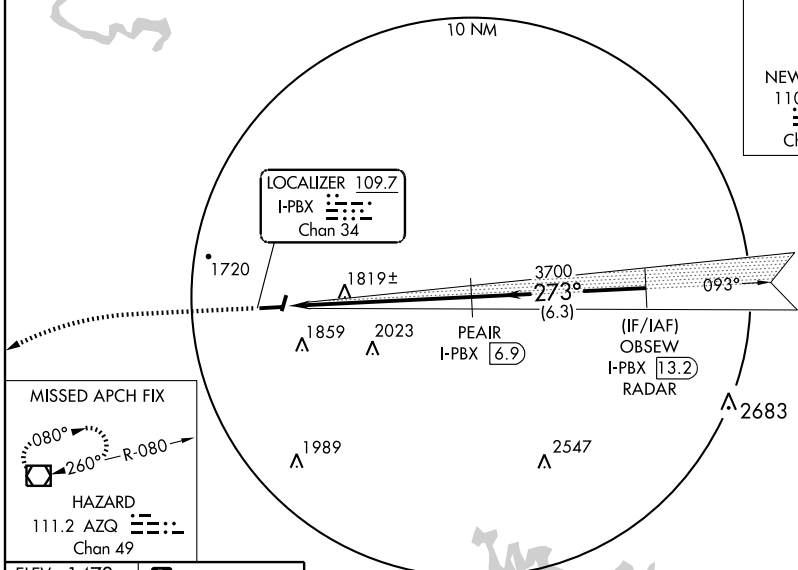
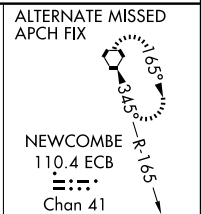
**ILS or LOC/DME RWY 27**  
PIKEVILLE / PIKE COUNTY-HATCHER FIELD (P.BX)

**▽** Visibility reduction by helicopters NA. When local altimeter setting not received, use Jackson altimeter setting and increase S-ILS 27 DA to 1762 and all MDA 100 feet;  
**▲ NA** increase S-LOC 27 visibility Cat B ¼ mile and Cat C ½ mile; increase Circling visibility Cat B and C ¼ mile.

MISSED APPROACH: Climb to 3000 then climbing left turn to 4000 direct AZQ VOR/DME and hold.

AWOS-3 <b>121.225</b>	INDIANAPOLIS CENTER <b>126.575 257.850</b>	UNICOM <b>122.8 (CTAF) 0</b>
--------------------------	---	---------------------------------

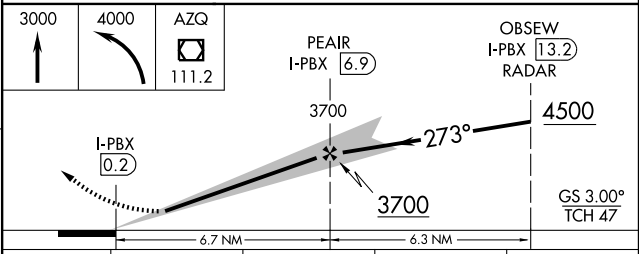
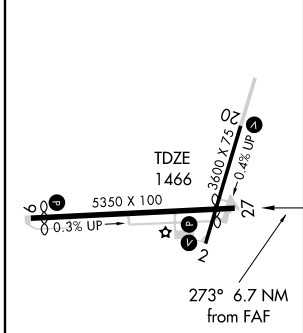
**RADAR REQUIRED**



SE-1, 19 NOV 2009 to 17 DEC 2009

SE-1, 19 NOV 2009 to 17 DEC 2009

ELEV 1473 **D**



CATEGORY	A	B	C	D
S-ILS 27	1666-1 200 (200-1)			NA
S-LOC 27	2120-1	654 (700-1)	2120-1¾ 654 (700-1¾)	NA
CIRCLING	2120-1	647 (700-1)	2160-2 687 (700-2)	NA

PIKEVILLE, KENTUCKY  
MIRL Rwy's 2-20 and 9-27 **0**  
REIL Rwy's 2, 9, 20 and 27 **0**