

# RNAV (GPS) RWY 9

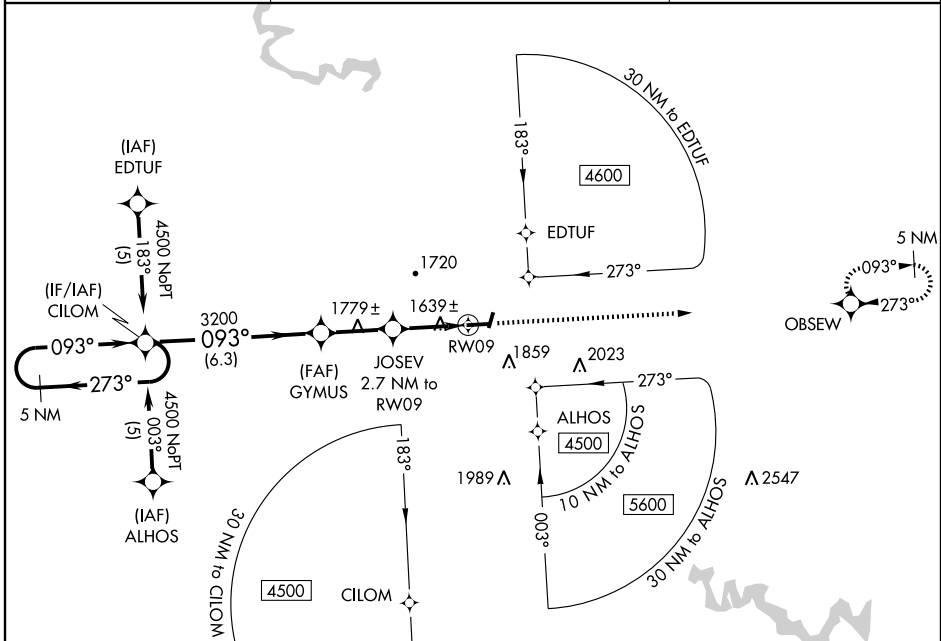
PIKEVILLE / PIKE COUNTY-HATCHER FIELD (P.B.X)

APP CRS <b>093°</b>	Rwy Ldg TDZE Apt Elev	<b>4650</b> <b>1454</b> <b>1473</b>
------------------------	-----------------------------	---

**⚠** DME/DME RNP-0.3 NA. Visibility reduction by helicopters NA.  
**⚠** NA When local altimeter setting not received, use Jackson altimeter setting and increase all MDA 100 feet and all Cat C visibility ¼ mile.

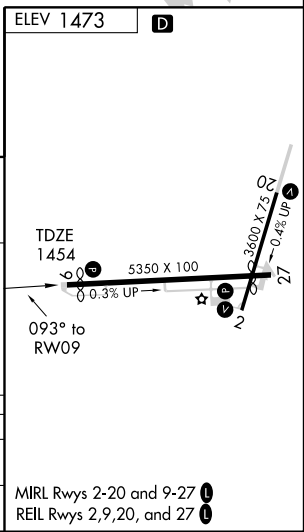
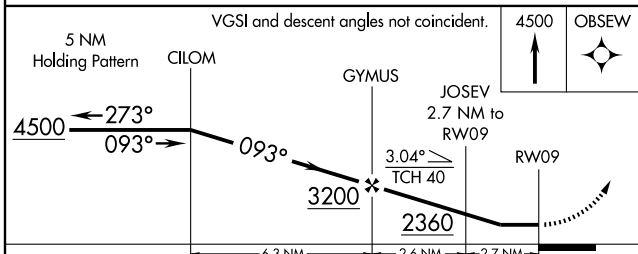
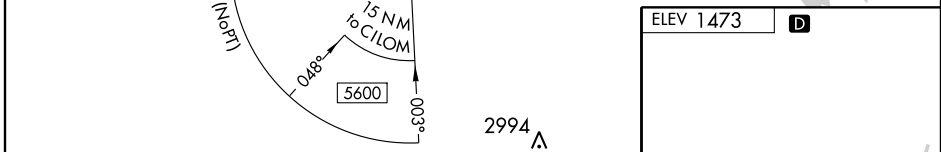
MISSED APPROACH: Climb to 4500 direct OBSEW and hold.

AWOS-3 <b>121.225</b>	INDIANAPOLIS CENTER <b>126.575 257.850</b>	UNICOM <b>122.8</b> (CTAF) <b>D</b>
--------------------------	---	--



SE-1, 19 NOV 2009 to 17 DEC 2009

SE-1, 19 NOV 2009 to 17 DEC 2009



CATEGORY	A	B	C	D
LNVA MDA	1960-1	506 (500-1)	1960-1½ 506 (500-1½)	NA
CIRCLING	2000-1 527 (600-1)	2080-1 607 (700-1)	2160-2 687 (700-2)	NA

MIRL Rwy 2-20 and 9-27 **D**  
 REIL Rwy 2,9,20, and 27 **D**