

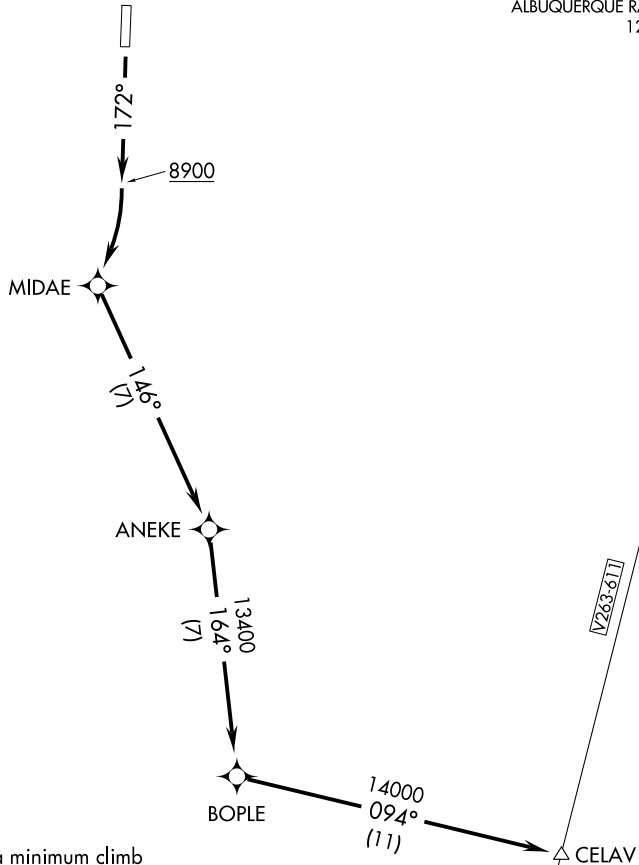
(ANEKE2.CELAV) 08213

SL-9482 (FAA)

ANEKE TWO DEPARTURE (RNAV) (OBSTACLE)

ANGEL FIRE (AXX)
ANGEL FIRE, NEW MEXICO

AWOS-3 118.025
ALBUQUERQUE CENTER
132.8 346.35
ALBUQUERQUE RADIO
122.55



SW-1, 19 NOV 2009 to 17 DEC 2009

SW-1, 19 NOV 2009 to 17 DEC 2009

TAKE-OFF MINIMUMS

Rwy 17: Standard with a minimum climb of $526'$ per NM to 12300 .

Rwy 35: NA- obstacles.

NOTE: Do not exceed 250 KIAS until BOPLÉ.

NOTE: GPS required.

NOTE: RNAV 1

NOTE: Rwy 17, road $74'$ from DER, $481'$ right of centerline, $15'$ AGL/ $8414'$ MSL.

NOTE: Chart not to scale.



DEPARTURE ROUTE DESCRIPTION

TAKE-OFF RUNWAY 17: Climb heading 172° to 8900 , then climbing right turn to 14000 direct MIDAE, then via 146° track to ANEKE, then via 164° track to BOPLÉ, then via 094° track to CELAV.

ANEKE TWO DEPARTURE (RNAV) (OBSTACLE)

(ANEKE2.CELAV) 08213

ANGEL FIRE, NEW MEXICO
ANGEL FIRE (AXX)