

ROME, NEW YORK

AL-9515 (FAA)

RNAV (GPS) RWY 33

ROME/GRIFFISS INTL (RME)

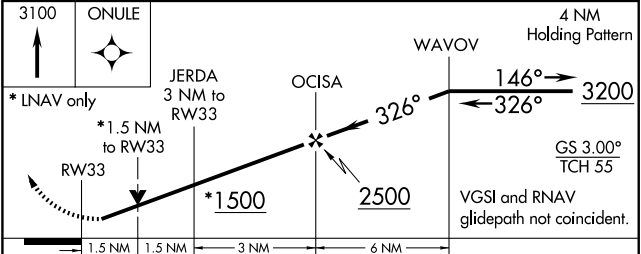
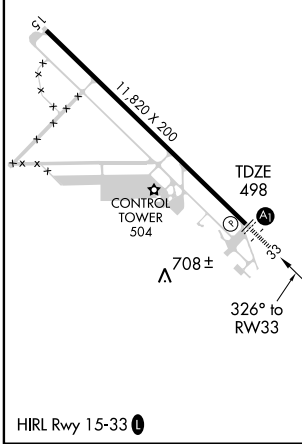
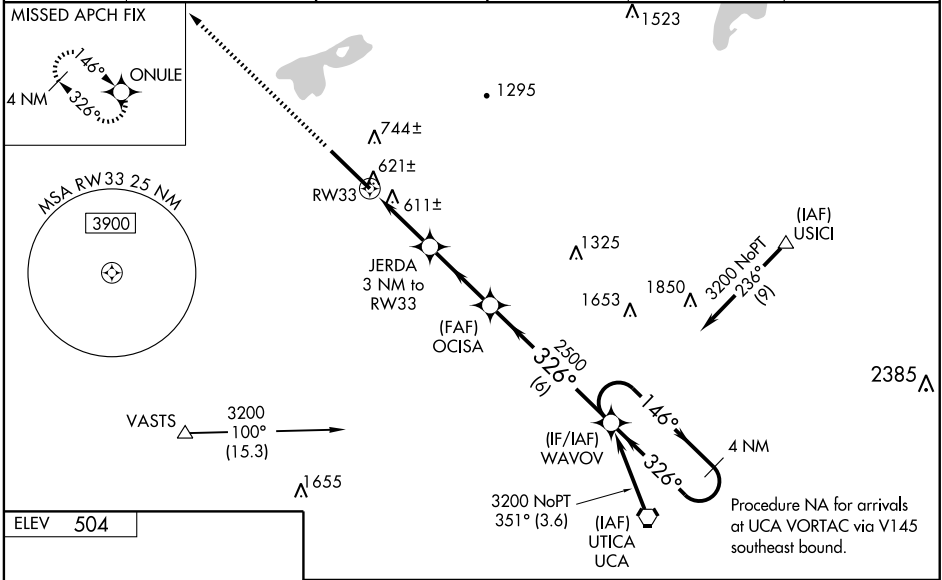
WAAS CH 42906 W33A	APP CRS 326°	Rwy Idg 11820 TDZE 498 Apt Elev 504
--	------------------------	--

⚠ Circling NA west of Rwy 15-33. For uncompensated Baro-VNAV systems, LNAV/VNAV NA below -16°C (4°F) or above 48°C (118°F). DME/DME RNP-0.3 NA. Visibility reduction by helicopters NA. When local altimeter setting not received, use Syracuse altimeter setting and increase all DA 85 feet and all MDA 100 feet; increase LPV all Cats and LNAV/VNAV all Cats, LNAV Cats C and D, and Circling Cats B, C, and D visibility ¼ mile. For inoperative ALSF-1, increase LPV all Cats visibility ½ mile and LNAV Cats A and B visibility ¼ mile. For inoperative ALSF-1, when using Syracuse altimeter setting, increase LPV all Cats visibility ½ mile, LNAV Cats A and B visibility ¼ mile. Baro-VNAV and VDP NA when using Syracuse altimeter setting.



MISSED APPROACH: Climb to 3100 direct ONULE and hold.

ATIS 118.7	GRIFFISS APP CON 120.925 269.5	GRIFFISS TOWER * 118.1 291.1	GND CON 121.9 291.1	CTAF 118.1	UNICOM 122.95
----------------------	--	--	-------------------------------	----------------------	-------------------------



CATEGORY	A	B	C	D
LPV DA		841-3/4	343 (400-3/4)	
LNAV/VNAV DA		978-1 1/4	480 (500-1 1/4)	
LNAV MDA	1020-3/4	522 (600-3/4)	1020-1 522 (600-1)	1020-1 1/4 522 (600-1 1/4)
CIRCLING	1120-1 616 (700-1)	1160-1 656 (700-1)	1200-2 696 (700-2)	1280-2 1/2 776 (800-2 1/2)

ROME, NEW YORK
Orig 09155

43°14'N - 75°24'W

RNAV (GPS) RWY 33

NE-2, 11 MAR 2010 to 08 APR 2010

NE-2, 11 MAR 2010 to 08 APR 2010