

ROME, NEW YORK

AL-9515 (FAA)

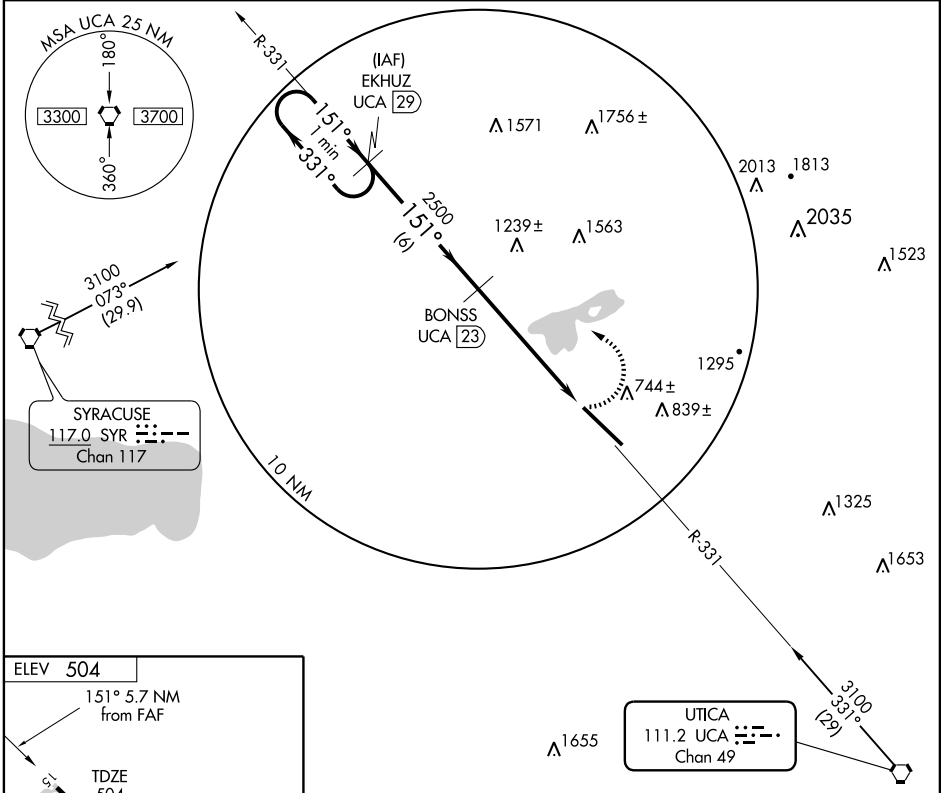
VORTAC UCA 111.2 Chan 49	APP CRS 151°	Rwy Idg 11,820 TDZE 504 Apt Elev 504
--	------------------------	---

VOR/DME RWY 15

ROME/GRIFFISS INTL (RME)

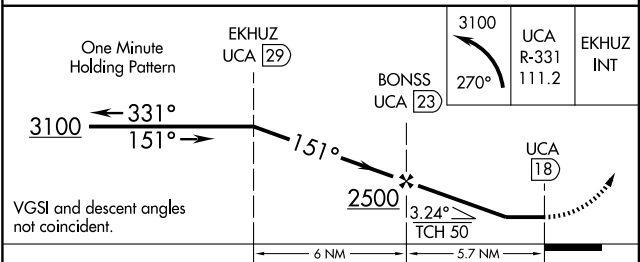
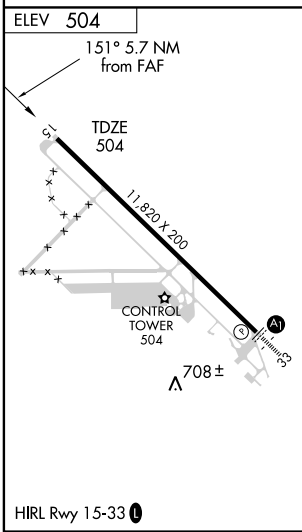
NA Circling NA west of Rwy 15-33. MISSED APPROACH: Climbing left turn to 3100 via heading 270° and UCA R-331 to EKHUZ/UCA 29 DME and hold.

ATIS 118.7	GRIFFISS APP CON 120.925 269.5	GRIFFISS TOWER * 118.1 291.1	GND CON 121.9 291.1	CTAF 118.1	UNICOM 122.95
----------------------	--	--	-------------------------------	----------------------	-------------------------



NE-2, 11 MAR 2010 to 08 APR 2010

NE-2, 11 MAR 2010 to 08 APR 2010



CATEGORY	A	B	C	D
S-15	1500-1¼ 996 (1000-1¼)	1500-1½ 996 (1000-1½)	1500-3	996 (1000-3)
CIRCLING	1500-1¼ 996 (1000-1¼)	1500-1½ 996 (1000-1½)	1500-3	996 (1000-3)

ROME, NEW YORK
Orig 09127

43°14'N - 75°24'W

VOR/DME RWY 15

ROME/GRIFFISS INTL (RME)