

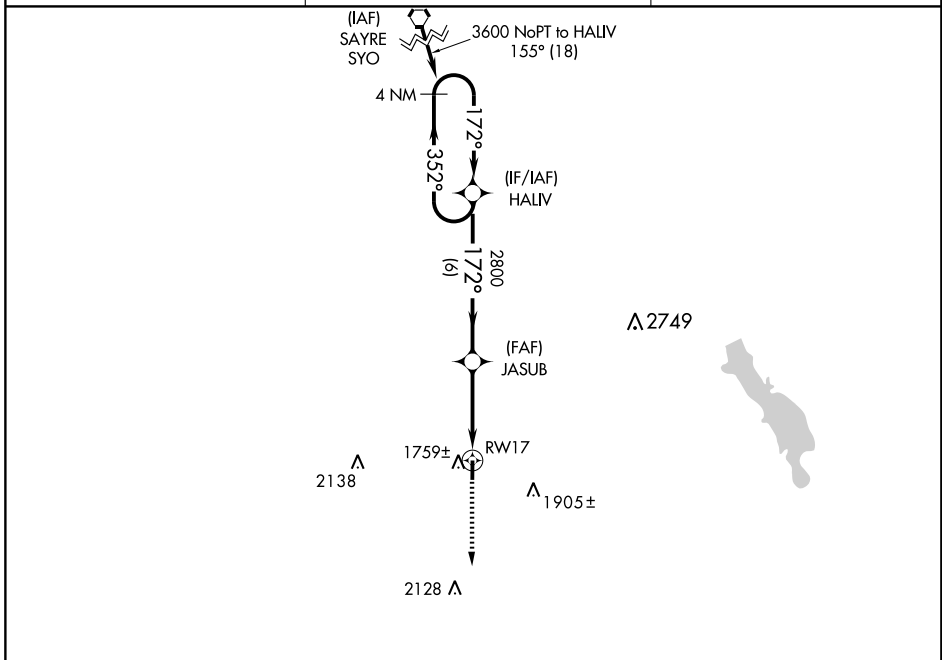
RNAV (GPS) RWY 17

MANGUM/SCOTT FIELD (2K4)

APP CRS 172°	Rwy Idg 4200
	TDZE 1634
	Apt Elev 1644

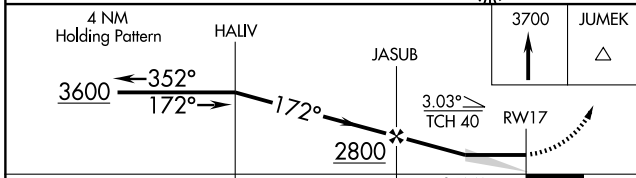
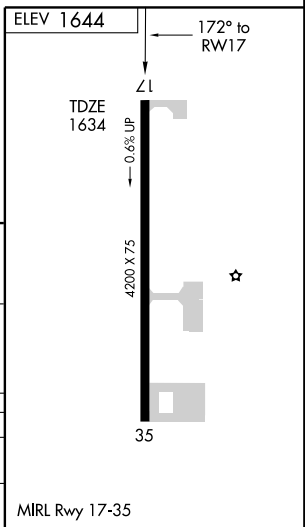
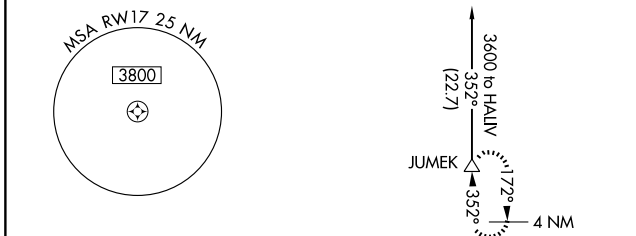
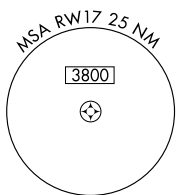
NA Use Hobart Rgnl altimeter setting; if not received, use Frederick Muni altimeter setting and increase all MDAs 100 feet. DME/DME RNP-0.3 NA. MISSED APPROACH: Climb to 3700 direct JUMEK and hold.

HOBART ASOS 133.325	ALTUS APP CON* 125.1 257.725	CTAF 122.9
-------------------------------	--	----------------------



SC-1, 11 MAR 2010 to 08 APR 2010

SC-1, 11 MAR 2010 to 08 APR 2010



CATEGORY	A	B	C	D
LNVA MDA	2160-1	526 (600-1)	2160-1½ 526 (600-1½)	NA
CIRCLING	2220-1	576 (600-1)	2220-1½ 576 (600-1½)	NA