

MARION, KENTUCKY

AL-9833 (FAA)

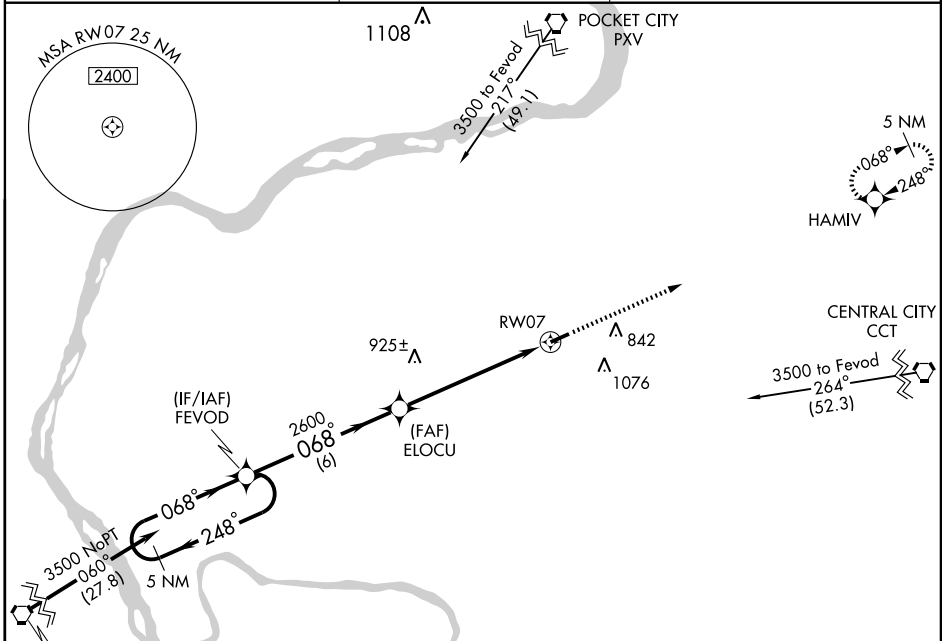
APP CRS **068°**
 Rwy Idg **4400**
 TDZE **650**
 Apt Elev **652**

RNAV (GPS) RWY 7
 MARION-CRITTENDEN COUNTY (5M9)

▲ NA DME/DME RNP-0.3 NA. Use Sturgis Muni altimeter setting, if not received, use Madisonville Muni altimeter setting and increase all MDAs 40 feet.

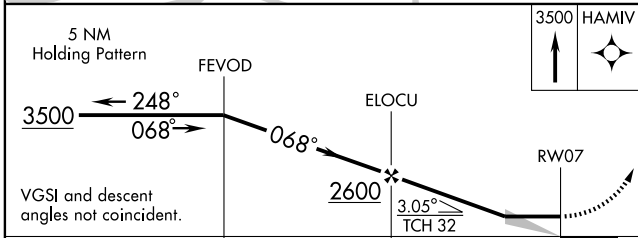
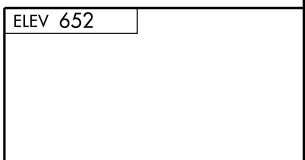
MISSED APPROACH: Climb to 3500 direct HAMIV and hold.

STURGIS MUNI AWOS-3 **118.775** MEMPHIS CENTER **133.65 292.15** CTAF **122.9**

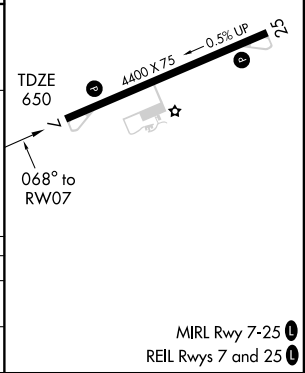


SE-1, 11 MAR 2010 to 08 APR 2010

SE-1, 11 MAR 2010 to 08 APR 2010



CATEGORY	A	B	C	D
LNNAV MDA	1160-1	510 (600-1)	1160-1½	510 (600-1½)
CIRCLING	1200-1	548 (600-1)	1280-1¾ 628 (700-1¾)	1460-2½ 808 (900-2½)



MARION, KENTUCKY
 Orig 08101

37°20'N - 88°07'W

MARION-CRITTENDEN COUNTY (5M9)
RNAV (GPS) RWY 7

MIRL Rwy 7-25
 REIL Rwys 7 and 25