

MARION, KENTUCKY

AL-9833 (FAA)

APP CRS	Rwy Idg	<b>4400</b>
<b>248°</b>	TDZE	<b>643</b>
	Apt Elev	<b>652</b>

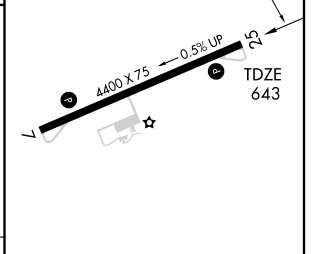
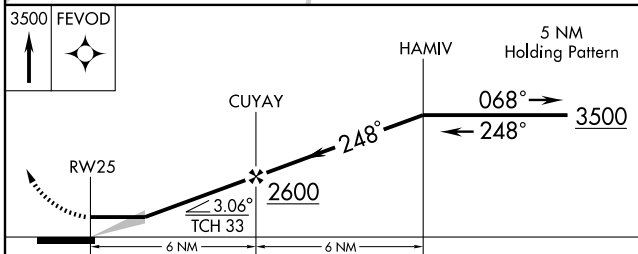
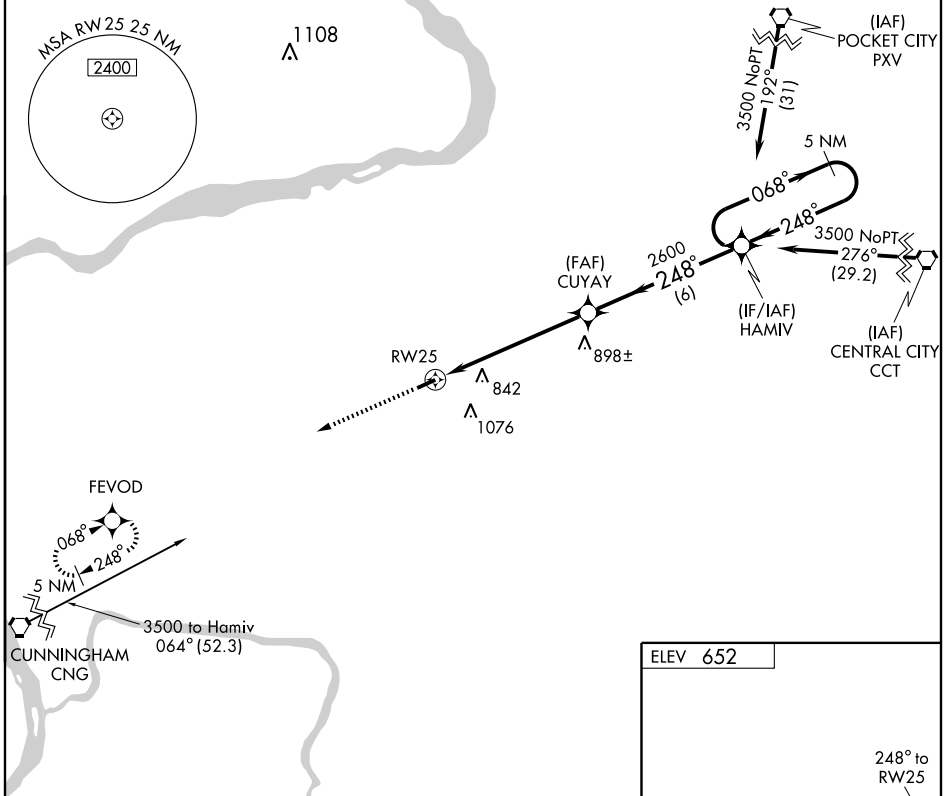
# RNAV (GPS) RWY 25

MARION-CRITTENDEN COUNTY (5M9)

**▲ NA** DME/DME RNP-0.3 NA. Use Sturgis Muni altimeter setting, if not received, use Madisonville Muni altimeter setting and increase all MDAs 40 feet.

MISSED APPROACH: Climb to 3500 direct FEVOD and hold.

STURGIS MUNI AWOS-3 <b>118.775</b>	MEMPHIS CENTER <b>133.65 292.15</b>	CTAF <b>122.9</b>
---------------------------------------	--	----------------------



CATEGORY	A	B	C	D
RNAV MDA	1220-1	577 (600-1)	1220-1½ 577 (600-1½)	1220-1¾ 577 (600-1¾)
CIRCLING	1220-1	568 (600-1)	1280-1¾ 628 (700-1¾)	1460-2½ 808 (900-2½)

MIRL Rwy 7-25 **1**  
REIL Rwy 7 and 25 **1**

SE-1, 11 MAR 2010 to 08 APR 2010

SE-1, 11 MAR 2010 to 08 APR 2010

MARION, KENTUCKY  
Orig 08101

37°20'N - 88°07'W

# MARION-CRITTENDEN COUNTY (5M9)

## RNAV (GPS) RWY 25