

MARION, KENTUCKY

AL-9833 (FAA)

APP CRS **068°**  
 Rwy Idg **4400**  
 TDZE **650**  
 Apt Elev **652**

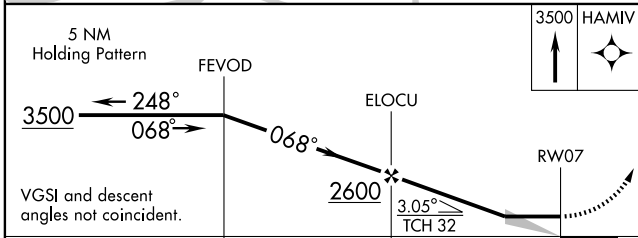
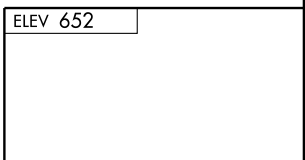
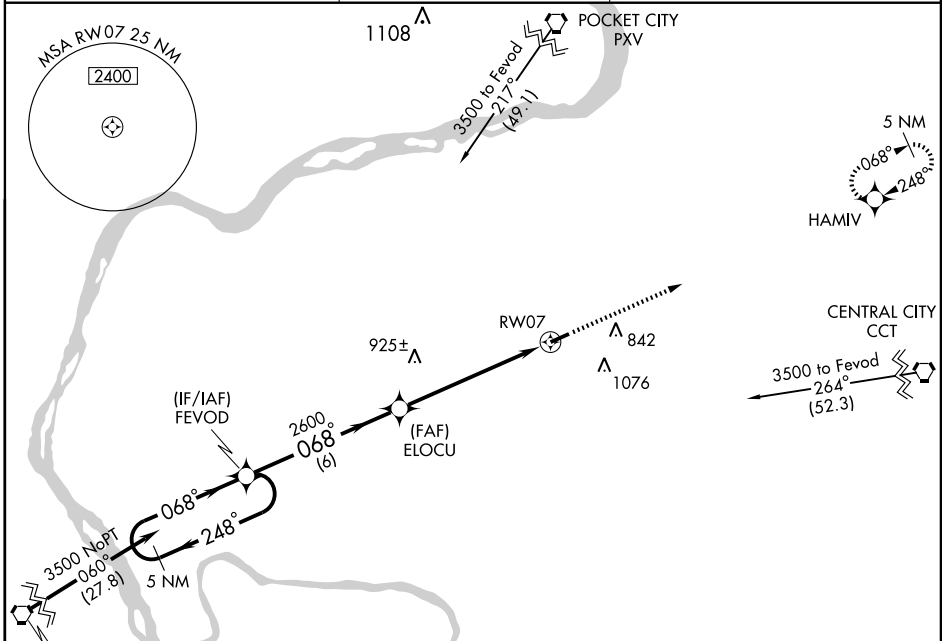
# RNAV (GPS) RWY 7

MARION-CRITTENDEN COUNTY (5M9)

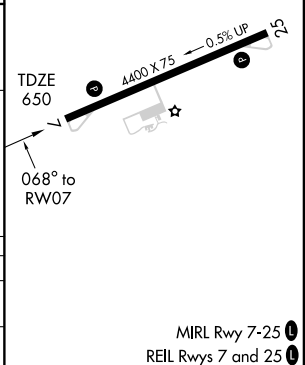
**▲ NA** DME/DME RNP-0.3 NA. Use Sturgis Muni altimeter setting, if not received, use Madisonville Muni altimeter setting and increase all MDAs 40 feet.

MISSED APPROACH: Climb to 3500 direct HAMIV and hold.

STURGIS MUNI AWOS-3 **118.775**      MEMPHIS CENTER **133.65 292.15**      CTAF **122.9**



CATEGORY	A	B	C	D
LNVA MDA	1160-1	510 (600-1)	1160-1½	510 (600-1½)
CIRCLING	1200-1	548 (600-1)	1280-1¾ 628 (700-1¾)	1460-2½ 808 (900-2½)



MIRL Rwy 7-25  
 REIL Rwys 7 and 25

SE-1, 19 NOV 2009 to 17 DEC 2009

SE-1, 19 NOV 2009 to 17 DEC 2009

MARION, KENTUCKY  
 Orig 08101

37°20'N - 88°07'W

# RNAV (GPS) RWY 7