

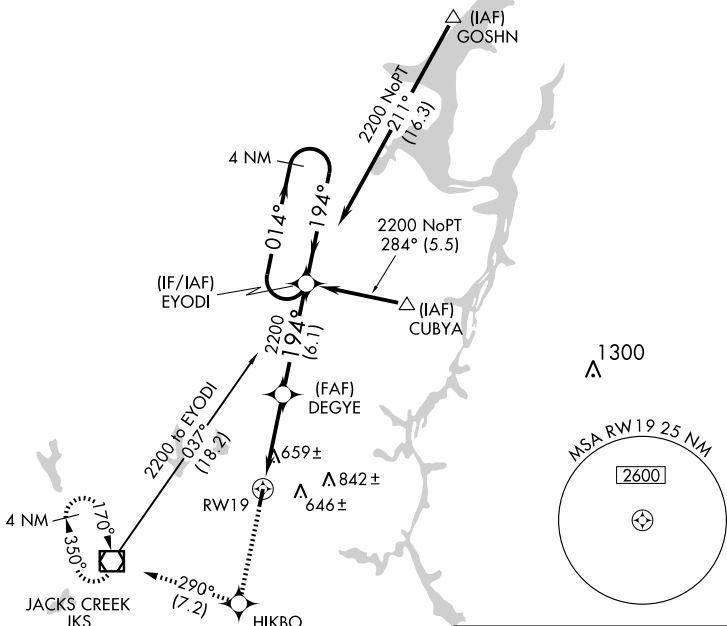
WAAS CH 97316 W19A	APP CRS 194°	Rwy Idg TDZE Apt Elev	6000 488 488
--	------------------------	-----------------------------	---

RNAV (GPS) RWY 19

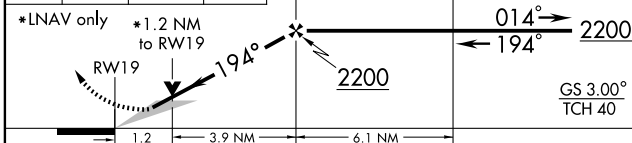
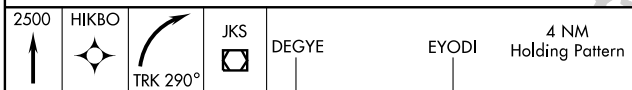
LEXINGTON-PARSONS/ BEECH RIVER RGNL (PVE)

NA DME/DME RNP-0.3 NA. Baro VNAV NA below -15° C (5° F). If local altimeter setting not received, use Huntingdon altimeter setting and increase all DAs/MDAs 80 feet. **MISSED APPROACH:** Climb to 2500 direct HIKBO and right turn via 290° track to JKS VOR/DME and hold.

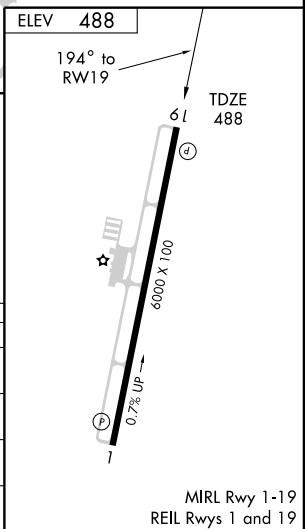
AWOS-3 118.125	MEMPHIS CENTER 125.85 379.25	UNICOM 123.0 (CTAF)
--------------------------	--	-------------------------------



Procedure NA for arrivals at JKS VOR/DME via V124 westbound.



CATEGORY	A	B	C	D
LPV DA	740-1		252 (300-1)	
LNAV/ VNAV DA	980-1¾		492 (500-1¾)	
LNAV MDA	920-1	432 (500-1)	920-1¼ 432 (500-1¼)	920-1½ 432 (500-1½)
CIRCLING	980-1¾		492 (500-1¾)	
			1040-2 552 (600-2)	



MIRL Rwy 1-19
REIL Rwys 1 and 19

SE-1, 11 MAR 2010 to 08 APR 2010

SE-1, 11 MAR 2010 to 08 APR 2010