

RNAV (GPS) RWY 12

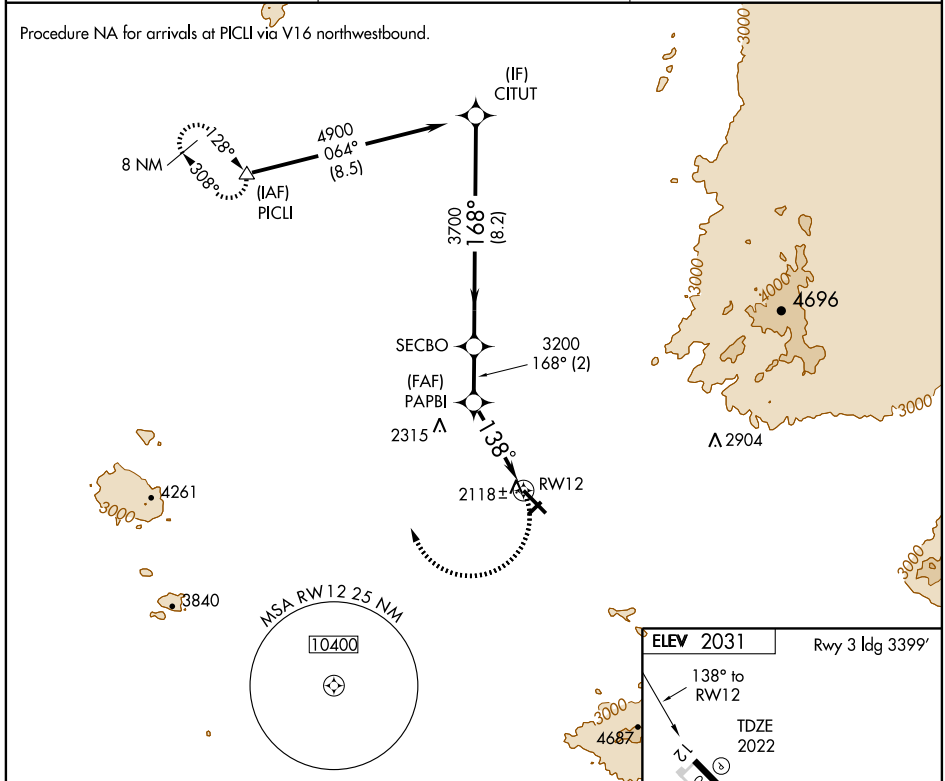
TUCSON/MARANA RGNL (AVQ)

APP CRS	Rwy Idg	6901
138°	TDZE	2022
	Apt Elev	2031

NA If local altimeter setting not received, use Ryan Field altimeter setting and increase all MDAs 100 feet.
 DME/DME RNP-0.3 NA.
 VDP NA when using Ryan Field altimeter setting.

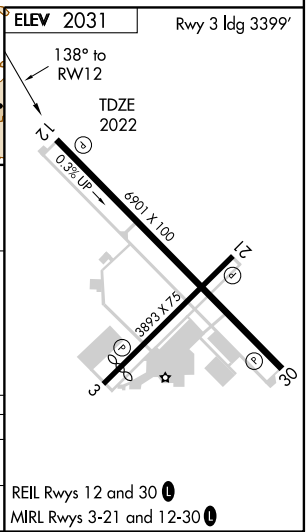
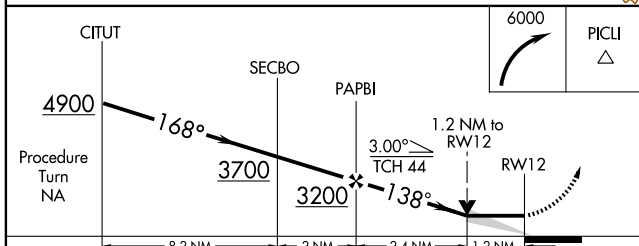
MISSED APPROACH: Climbing right turn to 6000 direct PICLI and hold, continue climb-in-hold to 6000.

AWOS-3 118.375	TUCSON APP CON 119.4 318.1	UNICOM 123.0 (CTAF)
--------------------------	--------------------------------------	-------------------------------



SW-4, 19 NOV 2009 to 17 DEC 2009

SW-4, 19 NOV 2009 to 17 DEC 2009



CATEGORY	A	B	C	D
LNAV MDA	2440-1	418 (500-1)	2440-1½ 418 (500-1½)	NA
CIRCLING	2440-1 409 (500-1)	2500-1 469 (500-1)	2580-1½ 549 (600-1½)	NA