

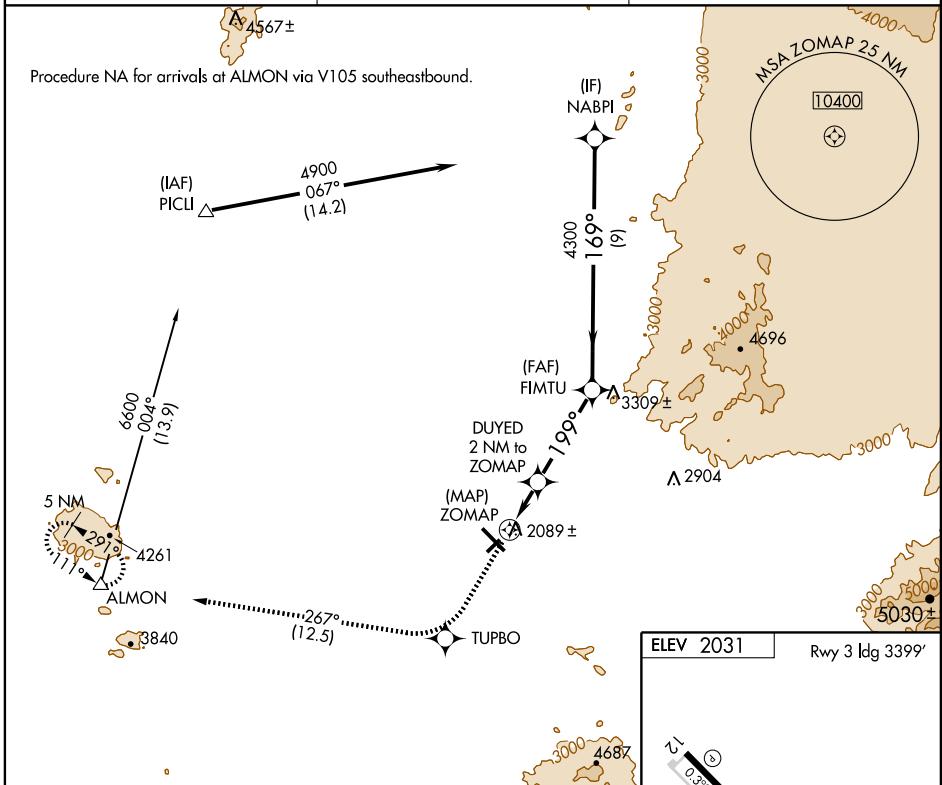
RNAV (GPS) RWY 21

TUCSON/MARANA RGNL (AVQ)

APP CRS	Rwy ldg	3893
199°	TDZE	2026
	Apt Elev	2031

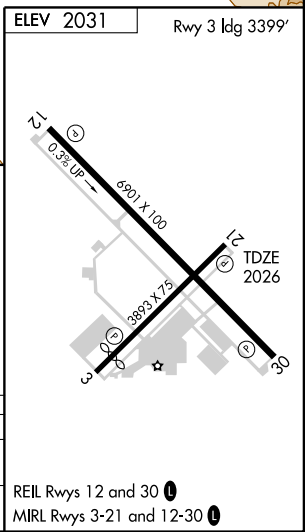
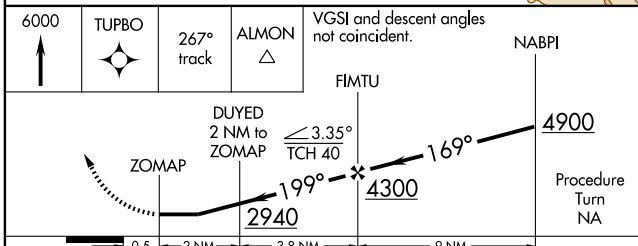
NA If local altimeter setting not received, use Ryan Field altimeter setting and increase all MDAs 100 feet.
 MISSED APPROACH: Climb to 6000 direct TUPBO and via 267° track to ALMON and hold, continue climb-in-hold to 6000.

AWOS-3 118,375	TUCSON APP CON 119.4 318.1	UNICOM 123.0 (CTAF)
--------------------------	--------------------------------------	-------------------------------



SW-4, 19 NOV 2009 to 17 DEC 2009

SW-4, 19 NOV 2009 to 17 DEC 2009



CATEGORY	A	B	C	D
LNAV MDA	2640-1	614 (700-1)	2640-1¾ 614 (700-1¾)	NA
CIRCLING	2640-1	609 (700-1)	2640-1¾ 609 (700-1¾)	NA