

TUCSON, ARIZONA

AL-10213 (FAA)

# RNAV (GPS)-E

TUCSON/MARANA RGNL (AVQ)

APP CRS <b>282°</b>	Rwy Idg TDZE Apt Elev	<b>N/A</b> <b>N/A</b> <b>2031</b>
------------------------	-----------------------------	---

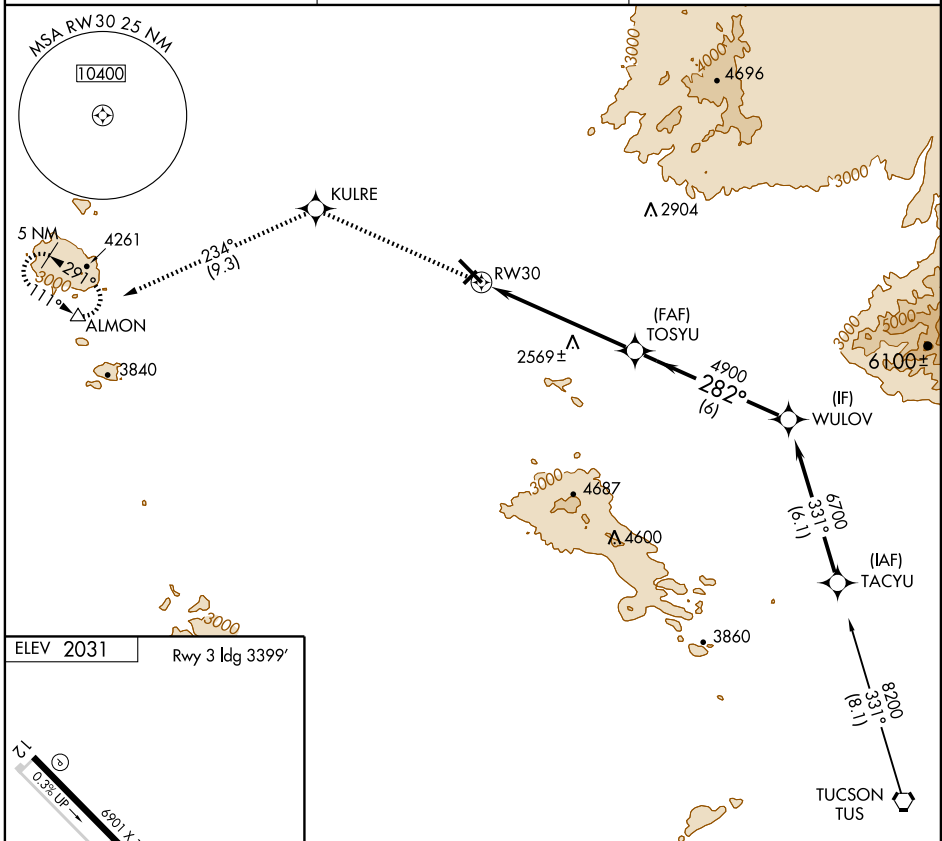
**⚠** If local altimeter setting not received, use Ryan Field altimeter setting and increase all MDAs 100 feet.  
**⚠ NA** DME/DME RNP-0.3 NA.

**MISSED APPROACH:** Climb to 6000 direct KULRE and 234° track to ALMON and hold, continue climb-in-hold to 6000.

AWOS-3  
**118.375**

TUCSON APP CON  
**119.4 318.1**

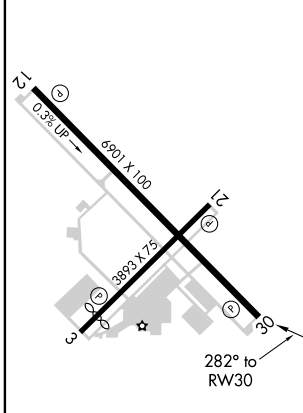
UNICOM  
**123.0 (CTAF) 0**



SW-4, 19 NOV 2009 to 17 DEC 2009

SW-4, 19 NOV 2009 to 17 DEC 2009

ELEV 2031 Rwy 3 Idg 3399'



REIL Rwy 12 and 30 0  
 MIRL Rwy 3-21 and 12-30 0

6000	KULRE	234° Track	ALMON	TOSYU	WULOV
				4900	6700
					Procedure Turn NA
				6 NM	6 NM
CATEGORY	A	B	C	D	
CIRCLING	2820-1 789 (800-1)	2820-1¼ 789 (800-1¼)	2820-2¼ 789 (800-2¼)	NA	

TUCSON, ARIZONA  
 Orig-A 07298

32°25'N - 111°13'W

TUCSON/MARANA RGNL (AVQ)

# RNAV (GPS)-E