

HILLSBORO, TEXAS

AL-10219 (FAA)

WAAS CH 65908 W34A	APP CRS 336	Rwy Idg 3998 TDZE 684 Apt Elev 686
--	-----------------------	---

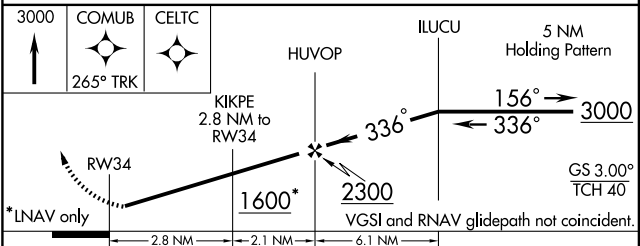
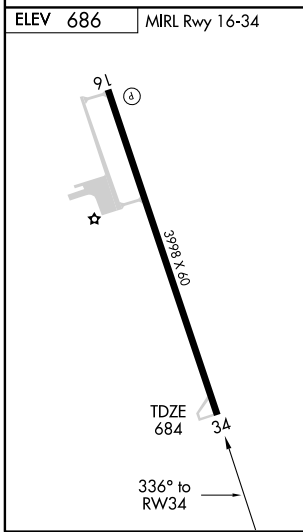
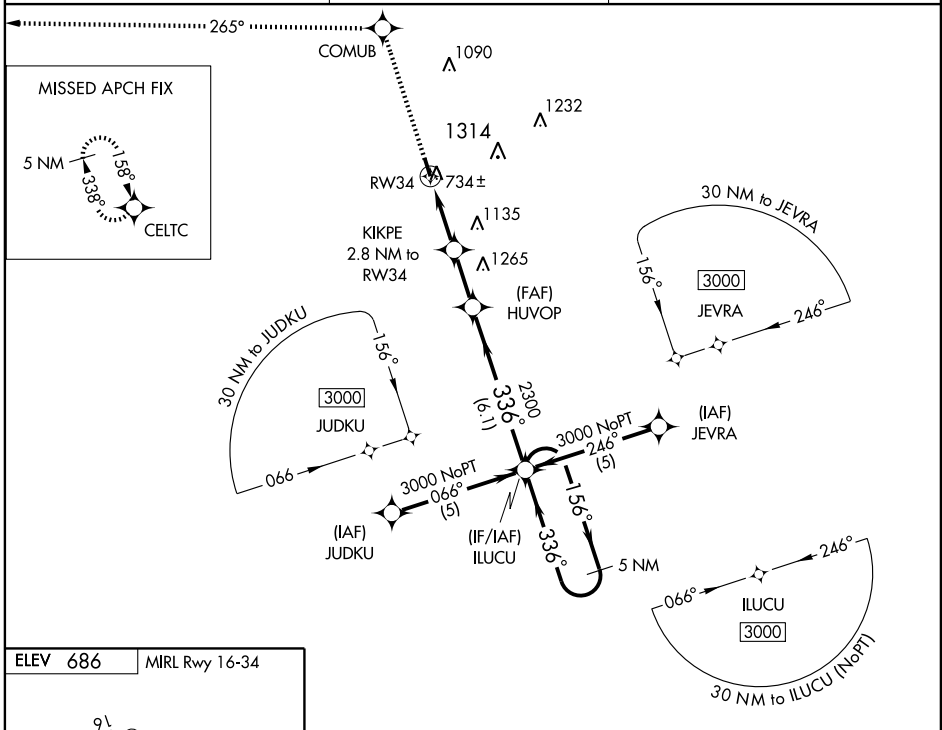
RNAV (GPS) RWY 34

HILLSBORO MUNI (INJ)

▼ Baro-VNAV NA when using Cleburne Muni altimeter setting. DME/DME RNP-0.3 NA. For uncompensated Baro-VNAV systems, LNAV/VNAV NA below -16°C (4°F) or above 54°C (130°F). Visibility reduction by helicopters NA. When local altimeter setting not received use Cleburne Muni altimeter setting and increase all DA/MDA 80 feet, increase LPV and LNAV/VNAV visibility ¼ mile all Cats.

▲ MISSED APPROACH: Climb to 3000 direct COMUB and via 265° track to CELTC and hold.

AWOS-3 118.725	WACO APP CON 127.65 352.0	CTAF 122.9
--------------------------	-------------------------------------	----------------------



CATEGORY	A	B	C	D
LPV DA	934-1	250 (300-1)		NA
LNAV/VNAV DA	1004-1¼	320 (400-1¼)		NA
LNAV MDA	1320-1	636 (700-1)		NA
CIRCLING	1320-1	634 (700-1)		NA

HILLSBORO, TEXAS
Amdt 1 10042

32° 05' N-97° 06' W

RNAV (GPS) RWY 34

SC-2, 11 MAR 2010 to 08 APR 2010

SC-2, 11 MAR 2010 to 08 APR 2010