

RNAV (GPS) RWY 28

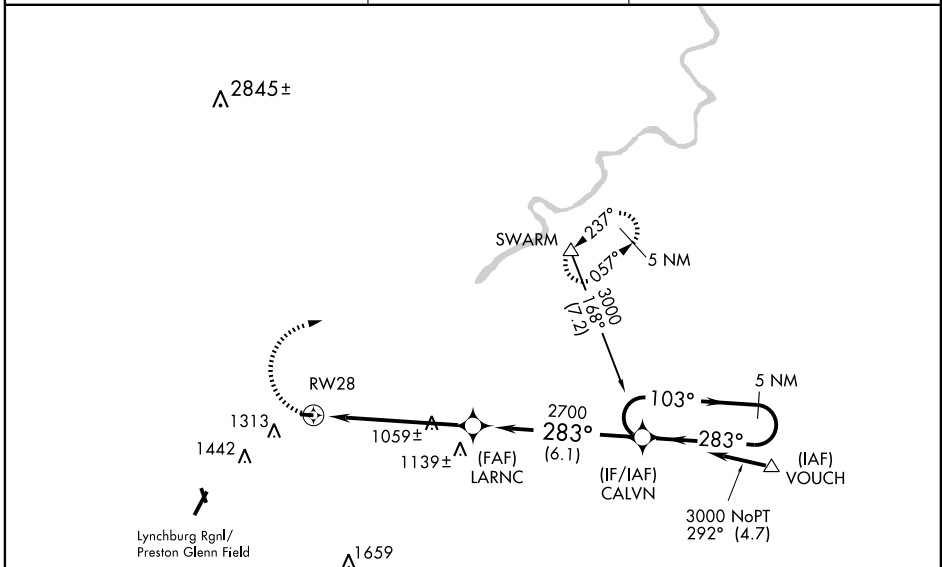
LYNCHBURG/ FALWELL (W24)

APP CRS 283°	Rwy Idg 2932
	TDZE 939
	Apt Elev 939

▼ Use Lynchburg Rgnl/Preston Glenn Field altimeter setting, if not received use Farmville altimeter setting and increase all MDAs 160 feet.
▲ NA VDP NA when using Farmville altimeter setting. Procedure NA at night.
 DME/DME RNP-0.3 NA.

MISSED APPROACH: Climbing right turn to 3500 direct SWARM and hold.

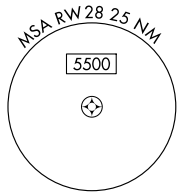
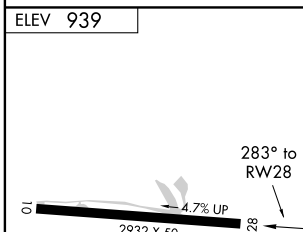
LYNCHBURG RGNL/PRESTON GLENN FIELD ASOS 119.8	ROANOKE APP CON 135.0 254.32	UNICOM 123.0 (CTAF)
--	--	-------------------------------



NE-3, 11 MAR 2010 to 08 APR 2010

NE-3, 11 MAR 2010 to 08 APR 2010

Procedure NA for arrivals at VOUCH via V16-260 E Bnd.



3500	SWARM				
		LARNC		CALVN	5 NM Holding Pattern
		1.9 NM to RW28		103° →	← 283° 3000
		RW28	2700		
		≤ 3.05° TCH 40			
		1.9	3.8 NM	6.1 NM	
CATEGORY	A	B	C	D	
LNAV MDA	1460-1	521 (600-1)		NA	