

WAAS CH 42715 W18A	APP CRS 179°	Rwy Idg 4003 TDZE 843 Apt Elev 843
--	------------------------	---

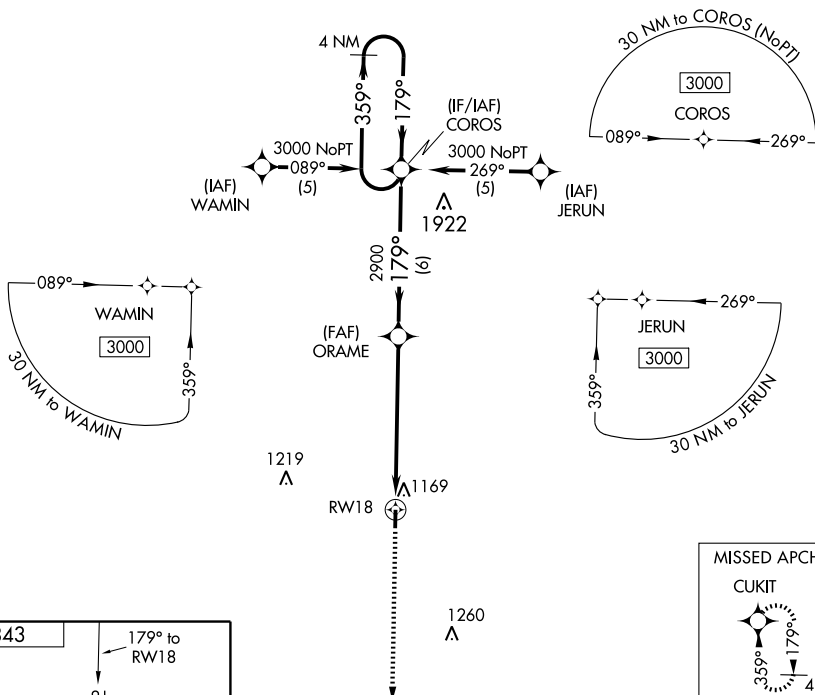
RNAV (GPS) RWY 18

BROOKFIELD/ NORTH CENTRAL MISSOURI RGNL (M08)

Baro-VNAV NA. DME/DME RNP-0.3 NA. Visibility reduction by helicopters NA. Use Chillicothe Muni altimeter setting, when not received, use Kirksville Rgnl altimeter setting and increase all DA 24 feet and all MDA 40 feet and increase LNAV and circling Cat B/C visibility ¼ mile.

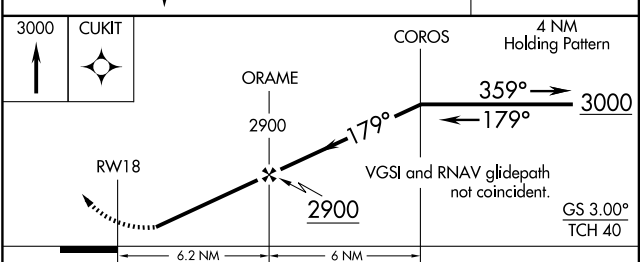
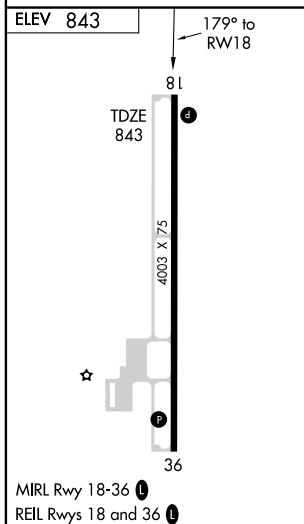
MISSED APPROACH: Climb to 3000 direct CUKIT and hold.

CHILlicothe AWOS-3 118.175	KANSAS CITY CENTER 125.25 381.5	CTAF 122.9
--------------------------------------	---	----------------------



NC-3, 11 MAR 2010 to 08 APR 2010

NC-3, 11 MAR 2010 to 08 APR 2010



CATEGORY	A	B	C	D
LPV DA	1188-1¼	345 (400-1¼)		NA
LNAV/VNAV DA	1529-2½	686 (700-2½)		NA
LNAV MDA	1560-1	717 (800-1)	1560-2 717 (800-2)	NA
CIRCLING	1560-1	717 (800-1)	1560-2 717 (800-2)	NA