

RNAV (GPS) RWY 34

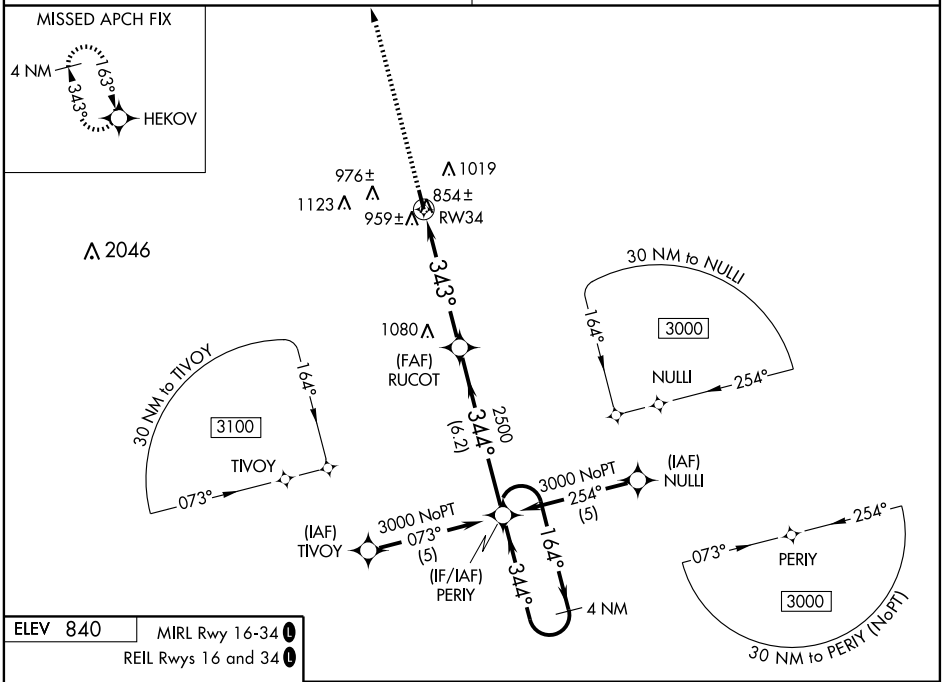
HIGGINSVILLE INDUSTRIAL MUNI (HIG)

WAAS CH 45901 W34A	APP CRS 343°	Rwy Idg TDZE Apt Elev	4400 826 840
--	------------------------	-----------------------------	---

NA DME/DME RNP-0.3 NA. Baro-VNAV NA.
Use Whiteman Air Force Base altimeter setting; if not received, use Lee's Summit Muni altimeter setting and increase LPV to 1190, LNAV/VNAV to 1329 and all MDAs 60 feet, increase LPV all Cats., LNAV/VNAV all Cats., LNAV Cat. C and D and Circling Cat. C visibilities ¼ mile.

MISSED APPROACH: Climb to 3000 direct HEKOV and hold.

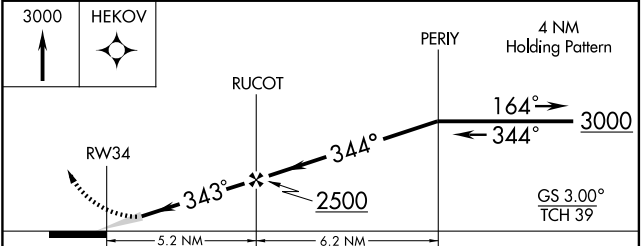
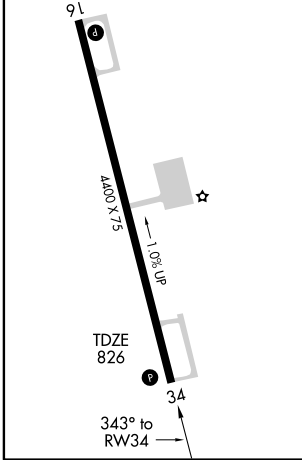
KANSAS CITY CENTER 135,575 323,15	UNICOM 122.8 (CTAF)
--	--------------------------------------



NC-3, 11 MAR 2010 to 08 APR 2010

NC-3, 11 MAR 2010 to 08 APR 2010

ELEV 840	MIRL Rwy 16-34
	REIL Rwys 16 and 34



CATEGORY	A	B	C	D
LPV DA	1144-1¼ 318 (400-1¼)			
LNAV/ VNAV DA	1283-1¾ 457 (500-1¾)			
LNAV MDA	1300-1	474 (500-1)	1300-1¼ 474 (500-1¼)	1300-1½ 474 (500-1½)
CIRCLING	1440-1	600 (600-1)	1440-1½ 600 (600-1½)	1440-2 600 (600-2)