

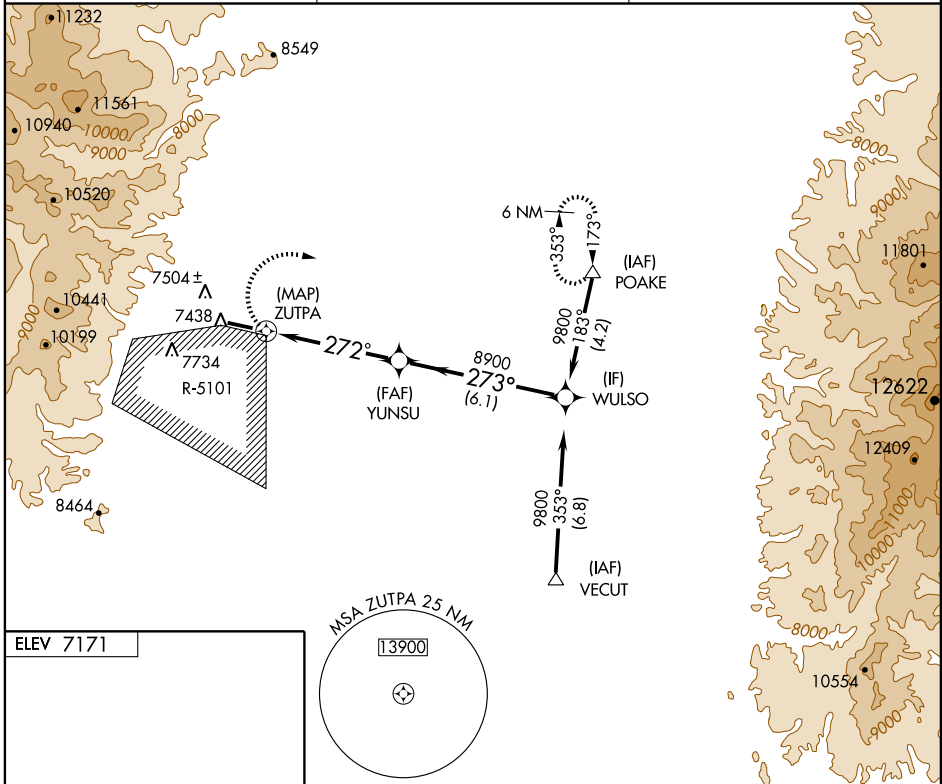
RNAV (GPS) RWY 27

LOS ALAMOS (L.A.M)

APP CRS 272°	Rwy Idg 5550
	TDZE 7132
	Apt Elev 7171

<p>NA DME/DME RNP- 0.3 NA. If local altimeter setting not received, procedure NA.</p>	<p>MISSED APPROACH: Climbing right turn to 11000 direct POAKE and hold.</p>
--	---

<p>AWOS-3 124.175</p>	<p>ALBUQUERQUE CENTER 132.8 346.35</p>	<p>UNICOM 123.0 (CTAF)</p>
----------------------------------	---	---------------------------------------



SW-1, 11 MAR 2010 to 08 APR 2010

SW-1, 11 MAR 2010 to 08 APR 2010

ELEV 7171

REL Rwy 27 **1**
MIRL Rwy 9-27 **1**

MSA ZUTPA 2.5 NM
13900

11000 POAKE \triangle VGSI and descent angles not coincident

WULSO

YUNSU

ZUTPA

1.2 NM to ZUTPA

$\le 3.01^\circ$ TCH 50

272°

273°

8900

9800

Procedure Turn NA

	0.5	1.2 NM	3.7 NM	6.1 NM	
CATEGORY	A	B	C	D	
LNAV MDA	7680-1	548 (600-1)	7680-1½ 548 (600-1½)	NA	
CIRCLING	NA				