

RNAV (GPS) RWY 2

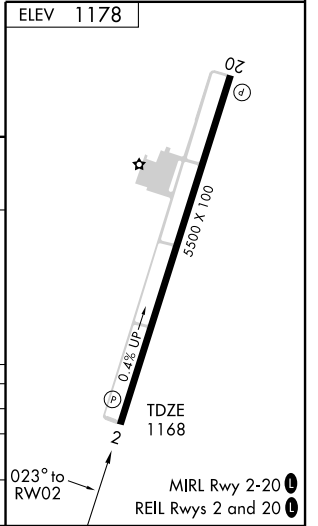
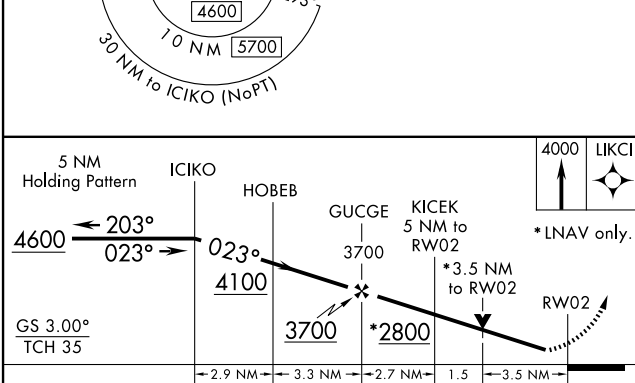
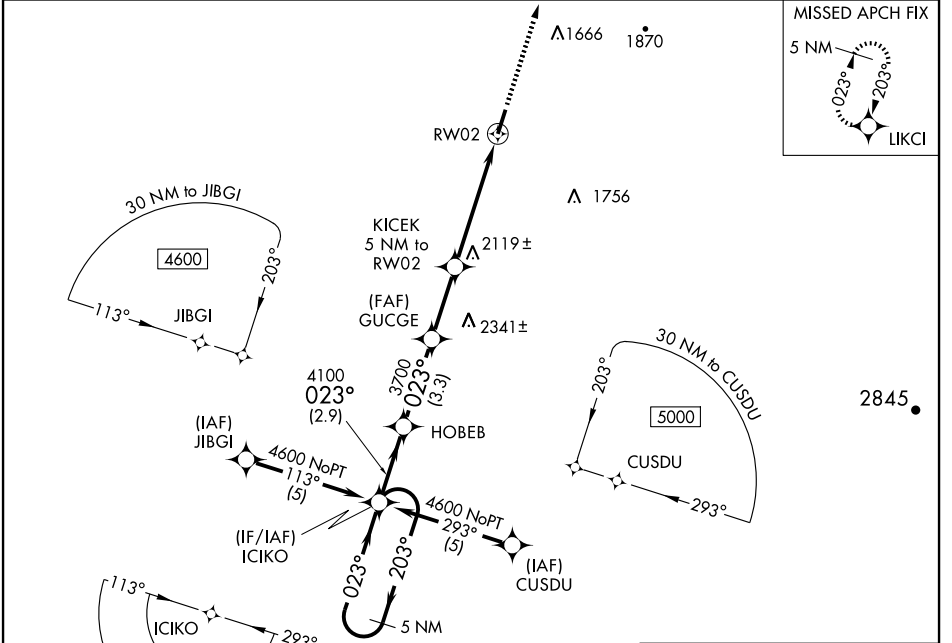
WILLIAMSBURG-WHITLEY COUNTY (W38)

| | | | |
|--|------------------------|---|-------------|
| WAAS CH 53312 W02A | APP CRS 023° | Rwy Idg TDZE 1168 Apt Elev 1178 | 5500 |
|--|------------------------|---|-------------|

⚠ DME/DME RNP-0.3 NA. Visibility reduction by helicopters NA. When local altimeter setting not received, use London-Corbin Arpt-Magee Fld altimeter setting and increase DA 48 feet and MDA 60 feet.
⚠ Circling to Rwy 20 NA at night.

MISSED APPROACH: Climb to 4000 direct LIKCI and hold.

| | | |
|--------------------------|---|---------------------------------|
| AWOS-3 119.575 | INDIANAPOLIS CENTER 124.625 371.925 | UNICOM 122.7 (CTAF) ① |
|--------------------------|---|---------------------------------|



| CATEGORY | A | B | C | D |
|-----------|---------------------------|---------------------------|-------------|---------------|
| LPV DA | 1418-1 | | 250 (300-1) | |
| LNNAV MDA | 2380-1½ 1212 (1300-1½) | 2380-1½ 1212 (1300-1½) | 2380-3 | 1212 (1300-3) |
| CIRCLING | 2380-1½ 1202 (1300-1½) | 2380-1½ 1202 (1300-1½) | 2380-3 | 1202 (1300-3) |

RNAV (GPS) RWY 2

SE-1, 19 NOV 2009 to 17 DEC 2009

SE-1, 19 NOV 2009 to 17 DEC 2009