

RNAV (GPS)-A

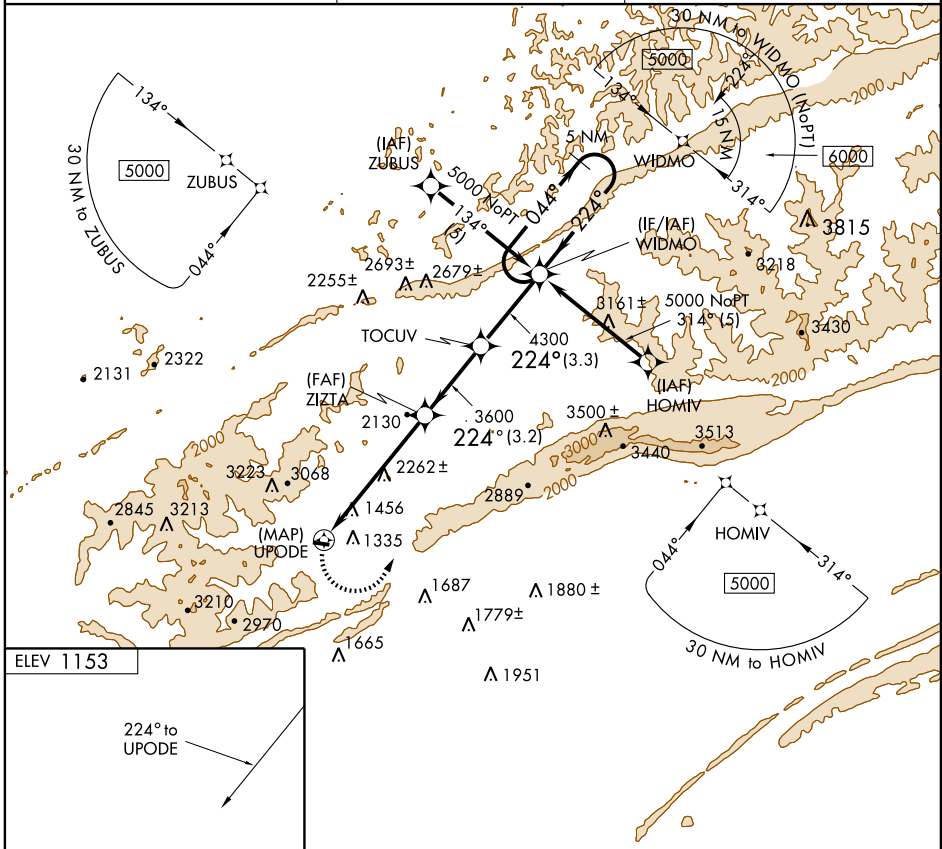
MIDDLESBORO-BELL COUNTY (1A6)

APP CRS 224°	Rwy Idg TDZE Apt Elev	NA NA 1153
------------------------	-----------------------------	---------------------------------------

⚠ If local altimeter setting not received, use London altimeter setting and increase all MDAs 380 feet.
⚠ Procedure NA at night. DME/DME RNP-0.3 NA.

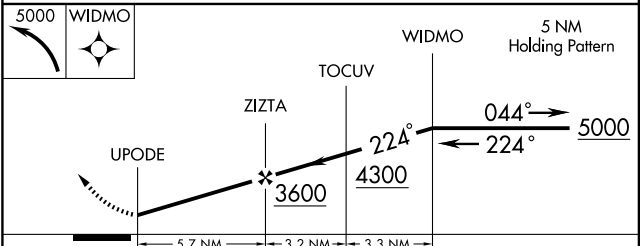
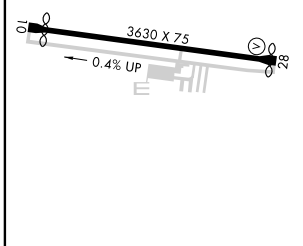
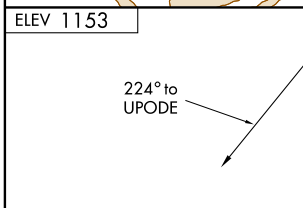
MISSED APPROACH: Climbing left turn to 5000 direct WIDMO and hold.

AWOS-3 119.425	INDIANAPOLIS CENTER 124.625 371.925	UNICOM 122.8 (CTAF)
--------------------------	---	-------------------------------



SE-1, 19 NOV 2009 to 17 DEC 2009

SE-1, 19 NOV 2009 to 17 DEC 2009



CATEGORY	A	B	C	D
CIRCLING	2820-1¼ 1667 (1700-1¼)	2880-1½ 1727 (1800-1½)	NA	