

APP CRS 172°	Rwy Idg 4600
TDZE 3187	
Apt Elev 3187	

RNAV (GPS) RWY 17

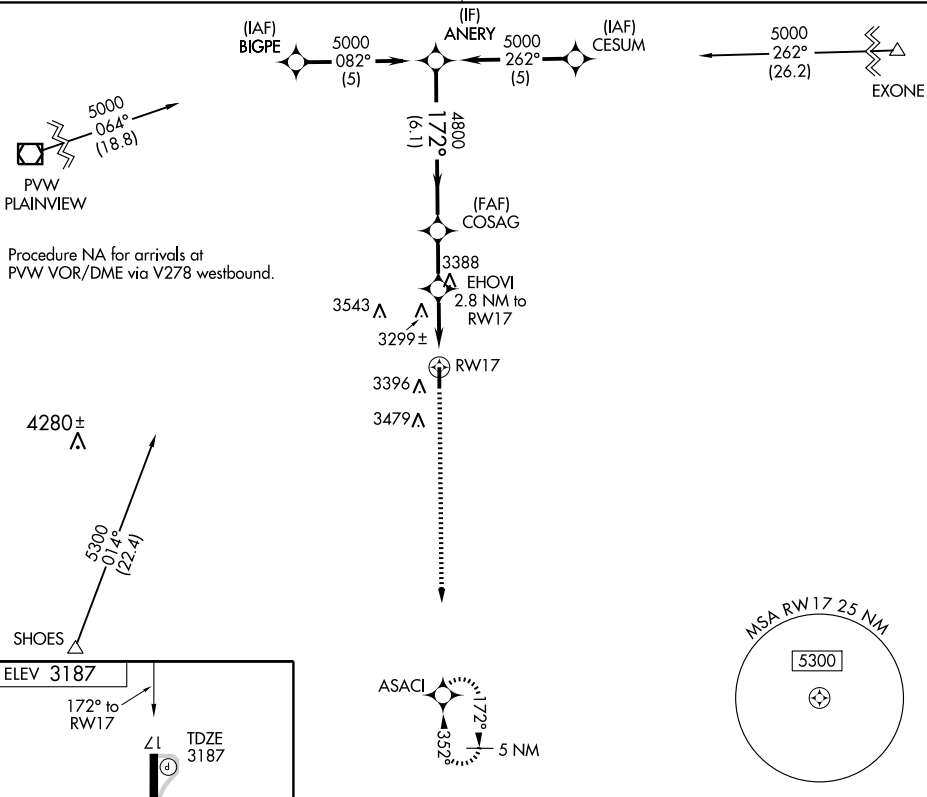
FLOYDADA MUNI (41F')

▽ DME/DME RNP-0.3 NA. Visibility reduction by helicopters NA. Use
△ NA Plainview altimeter setting; when not received, use Lubbock altimeter setting.

MISSED APPROACH: Climb to 5000
 direct ASACI and hold.

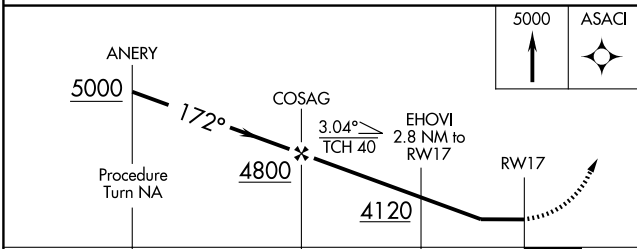
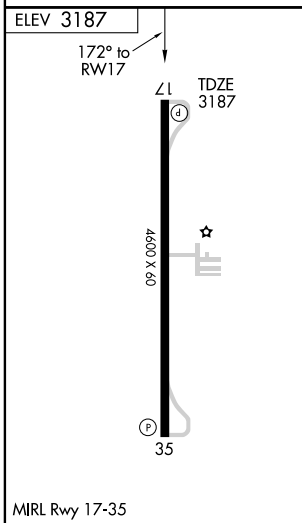
LUBBOCK APP CON
119.2 351.8

UNICOM
122.8 (CTAF)



SC-2, 19 NOV 2009 to 17 DEC 2009

SC-2, 19 NOV 2009 to 17 DEC 2009



CATEGORY	A	B	C	D
LNAV MDA	3720-1	533 (600-1)	3720-1½ 533 (600-1½)	NA
CIRCLING	3840-1	653 (700-1)	3920-2 733 (800-2)	NA